



PARTS CATALOGUE

FZ150 (2CB2) MALAYSIA



1R2CB-440E1

()

FZ150
PARTS CATALOGUE
©2015 by Yamaha Motor Co., Ltd.
1st edition, September 2015
All rights reserved.
Any reprinting or unauthorized use
without the written permission of
Yamaha Motor Co., Ltd.
is expressly prohibited.
Printed in Japan.

FOREWORD

This Parts Catalogue is related to the parts for the model(s) on the cover page. When you are ordering replacement parts, please refer to this Parts Catalogue and quote both part numbers and part names correctly.

1. Modifications or additions which have been made after the issue of the Parts Catalogue will be announced in the Parts News.

It is advisable that you make the necessary corrections to the Parts Catalogue according to the Parts News.

2. Abbreviations

The following abbreviations are used in this Parts Catalogue.

“UR” Use specified parts number.

“UN” Use as many as needed.

“AP” Alternate Parts

“LM” Locally Made (Parts need to be ordered locally)

“F#” Frame No. (Applicable machine No.)

“O/S” Over Size

3. The number of components for assembly

- Parts, which are to be supplied in an assembly, are listed with a dot (.) in front of the part name as shown below.
- The numeral appearing to the right of each component part indicates the quantity of parts for each assembly unit.

PART NO.	DESCRIPTION	Q'TY	REMARKS
2F5-83310-60	FRONT FLASHER LIGHT ASSY	2	
115-83311-60	.BULB (6V-18W)	1	

4. Applicable colours of graphics are represented in the “REMARKS” as shown below.

PART NO.	DESCRIPTION	Q'TY	REMARKS
2N4-24110-00-X5	FUEL TANK COMP.	2	MXR
3J1-24240-10	.GRAPHIC, FUEL TANK	1	FOR MXR

5. Note that the illustrations for reference in finding parts numbers are not to be used for assembling. When assembling, please use the applicable service manual.

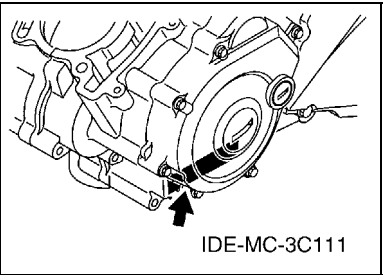
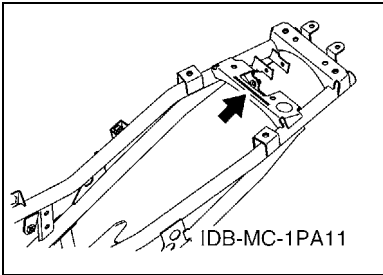
6. The asterisk (*) before a reference number indicates modified items after the first edition.

FOREWORD

7. Applicable Serial No.

Frame Serial No.

Engine Serial No.



8. Applicable Colour Code (The (*) mark shows Model colour.)

Abbreviation	Colour Name	Colour Code
MDS	MIDNIGHT SILVER	007M
MNM3(*)	MAT GRAY METALLIC 3	1278
RM7(*)	RED METALLIC 7	1218
S3	SILVER 3	0791
VPBC5	VIVID PURPLISH BLUE COCKTAIL 5	1177
WM6(*)	WHITE METALLIC 6	1124
YB	YAMAHA BLACK	0033

9. Applicable Starting Serial No.

Frame Serial No.

Serial No.	Name Of Q'ty Column	Model Code

Engine Serial No.

Serial No.	Name Of Q'ty Column	Model Code

CONTENTS

ENGINE

CYLINDER HEAD	1
CRANKSHAFT & PISTON	2
VALVE	4
CAMSHAFT & CHAIN	5
WATER PUMP	6
RADIATOR & HOSE	7
OIL PUMP	8
INTAKE	9
EXHAUST	11
CRANKCASE	12
CRANKCASE COVER 1	13
STARTER CLUTCH	14
CLUTCH	15
TRANSMISSION	17
SHIFT CAM & FORK	19
SHIFT SHAFT	20

CHASSIS

FRAME	21
FENDER	22
SIDE COVER	23
REAR ARM & SUSPENSION	25
STEERING	26
FRONT FORK	27
FUEL TANK	28
SEAT	31
FRONT WHEEL	32
FRONT BRAKE CALIPER	33
REAR WHEEL	34
REAR BRAKE CALIPER	35
STEERING HANDLE & CABLE	36
FRONT MASTER CYLINDER	37
STAND & FOOTREST	38
REAR MASTER CYLINDER	40
GENERATOR	41
STARTING MOTOR	42
FLASHER LIGHT	43
METER	45
HEADLIGHT	46
TAILLIGHT	48
HANDLE SWITCH & LEVER	49

ELECTRICAL 1	50
ELECTRICAL 2	51
OPTIONAL PARTS 1	53

INDEX

NUMERICAL INDEX	54
-----------------------	----

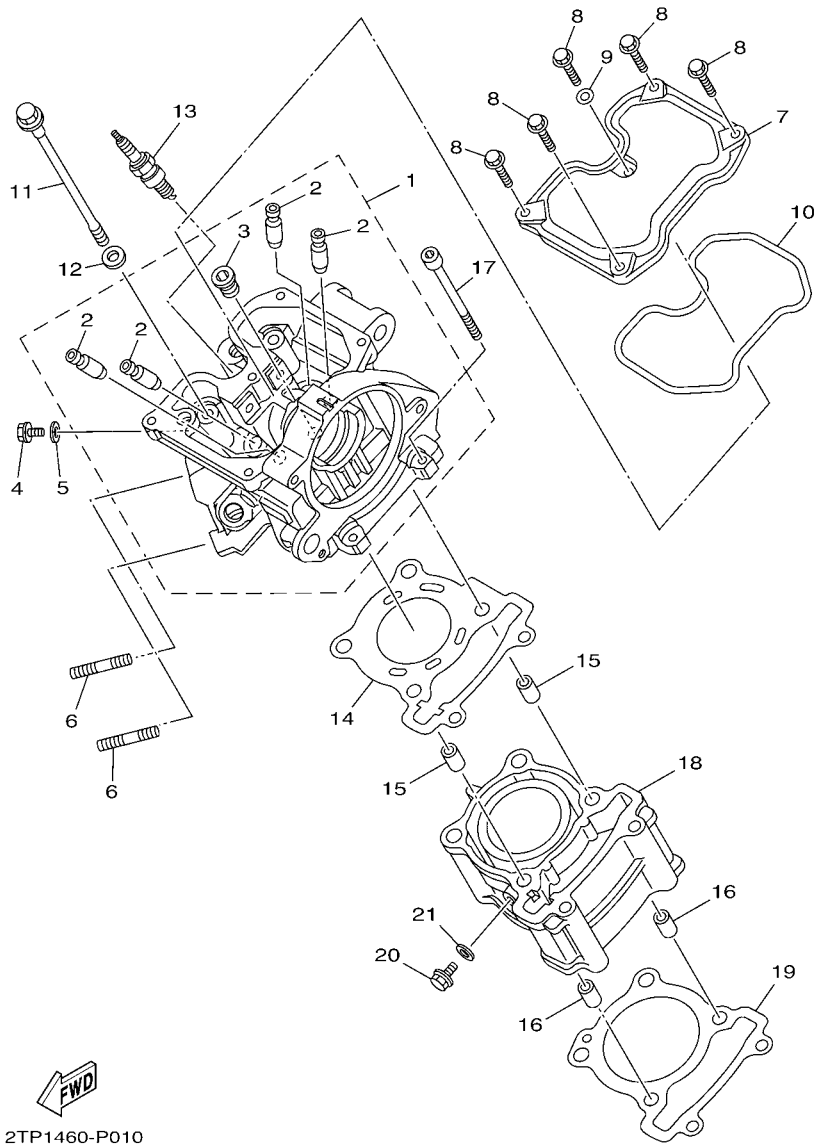
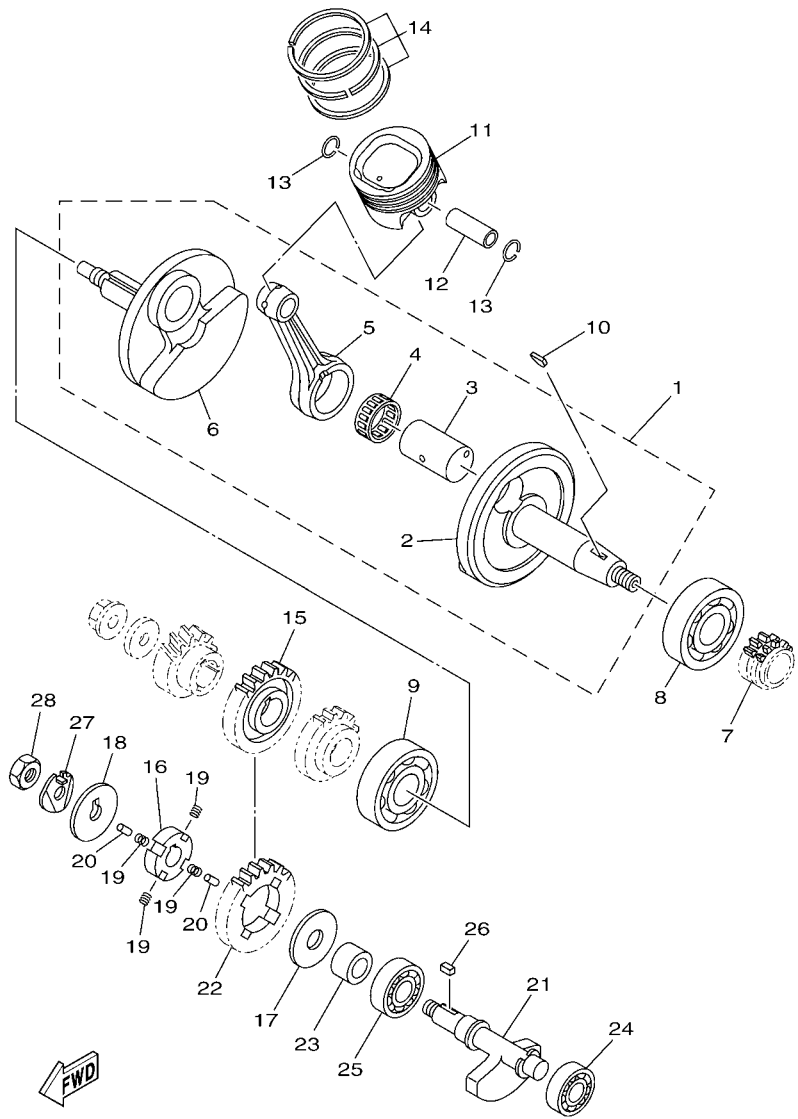


FIG. 1 CYLINDER HEAD

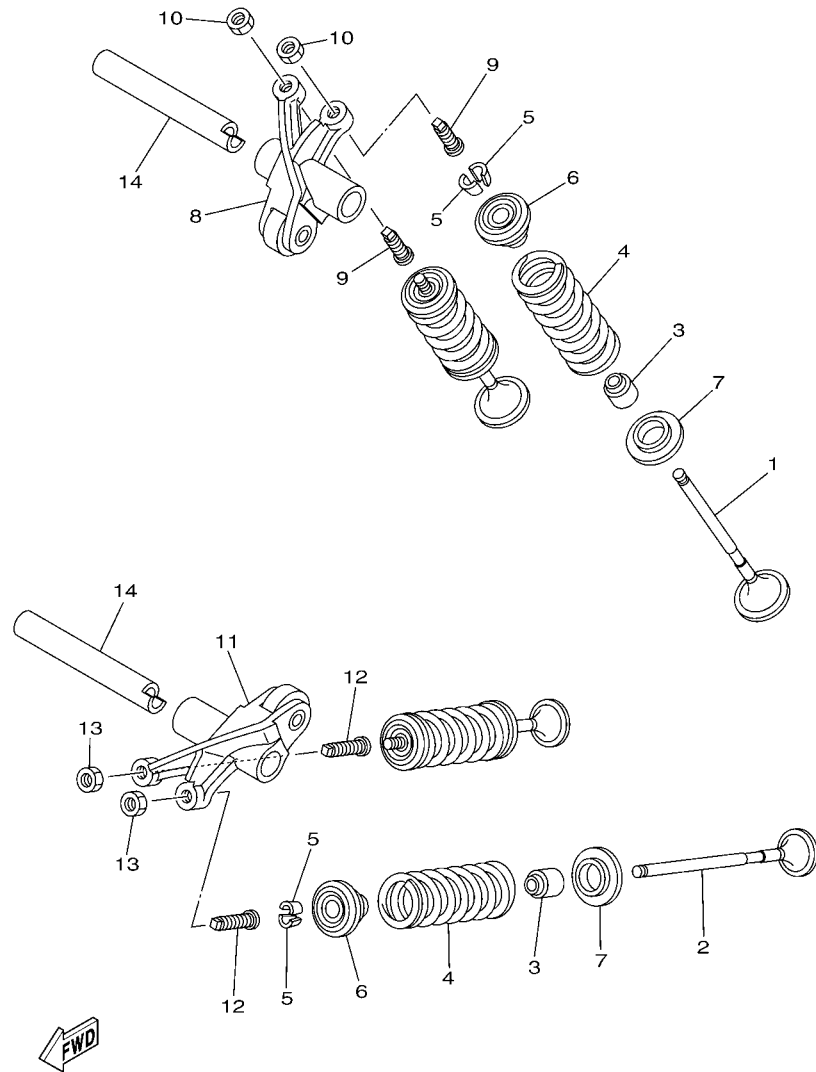
REF. NO.	PART NO.	DESCRIPTION	ZCB2				REMARKS
1	2PV-E1102-00	CYLINDER HEAD ASSY	1				
2	1S7-E1133-10	.GUIDE, VALVE 1	4				
3	90340-12813	.PLUG, STRAIGHT SCREW	1				
4	95022-06010	BOLT, FLANGE	1				
5	90430-06014	GASKET	1				
6	95612-08630	BOLT, STUD	2				
7	1PA-E1191-00	COVER, CYLINDER HEAD 1	1				
8	95022-06020	BOLT, FLANGE	5				
9	90430-06014	GASKET	1				
10	2PV-E1193-00	GASKET, HEAD COVER 1	1				
11	2PV-E1361-00	BOLT, CYLINDER HOLDING 1	4				
12	90201-08859	WASHER, PLATE	4				
13	94700-00872	PLUG, SPARK (NGK CR8E)	1				UR
	94700-00873	PLUG, SPARK (U24ESR-N)	1				UR
14	2PV-E1181-00	GASKET, CYLINDER HEAD 1	1				
15	91810-14809	PIN, DOWEL	2				
16	91810-14809	PIN, DOWEL	2				
17	91312-06100	BOLT	2				
18	2PV-E1311-00	CYLINDER 1	1				
19	50C-E1351-00	GASKET, CYLINDER	1				
20	95022-06010	BOLT, FLANGE	1				
21	90430-06014	GASKET	1				



1PA1460-M020

FIG. 2 CRANKSHAFT & PISTON

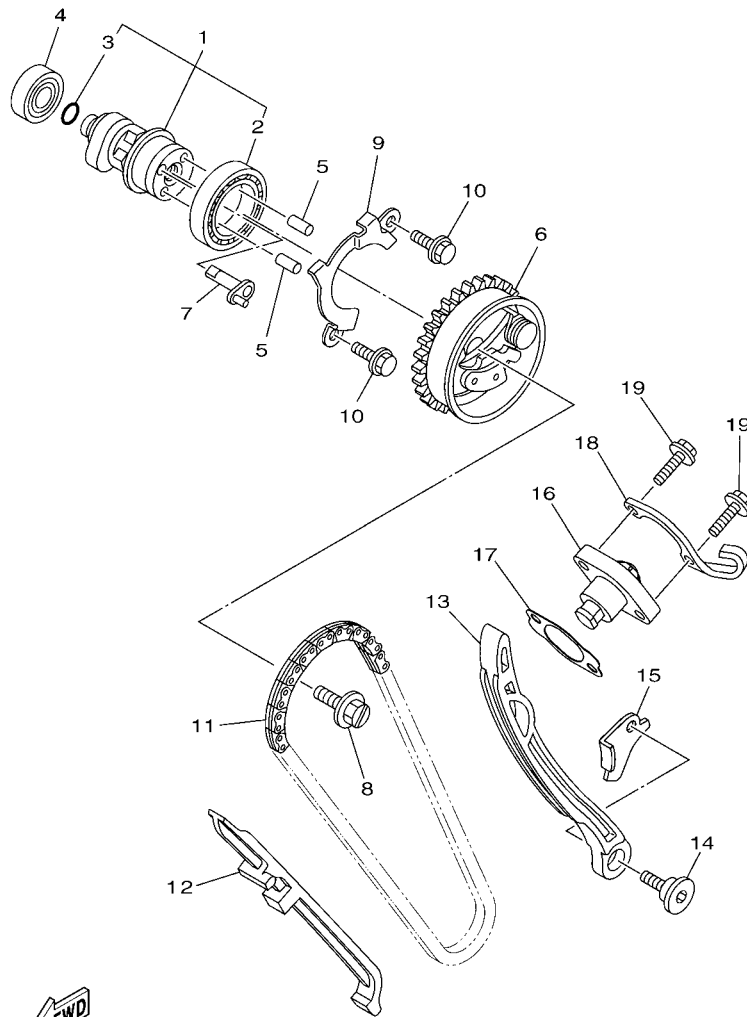
REF. NO.	PART NO.	DESCRIPTION	ZCBZ				REMARKS
1	3C1-E1400-10	CRANKSHAFT ASSY	1				
2	3C1-E1412-10	.CRANK 1	1				
3	3C1-11681-10	.PIN, CRANK 1	1				
4	93310-528YK	.BEARING	1				
5	3C1-E1651-11	.ROD, CONNECTING	1				
6	3C1-E1422-10	.CRANK 2	1				
7	3C1-E1549-00	SPROCKET, CAM CHAIN	1				
8	93306-305XP	BEARING	1				
9	93306-305XR	BEARING	1				
10	90280-03017	KEY, WOODRUFF	1				
11	3C1-E1631-11	PISTON (STD)	1				
12	3C1-E1633-10	PIN, PISTON	1				
13	93450-16115	CIRCLIP	2				
14	1PA-E1603-00	PISTON RING SET (STD)	1				
15	3C1-E1536-10	GEAR, DRIVE	1				
16	45P-E1496-00	BOSS, BUFFER	1				
17	90201-15821	WASHER, PLATE	1				
18	90214-10800	WASHER, CLAW	1				
19	90501-16800	SPRING, COMPRESSION	4				
20	93604-08800	PIN, DOWEL	2				
21	2FB-E1454-00	WEIGHT 1	1				UR
	1PA-E1454-00	WEIGHT 1	1				UR
22	3C1-E1531-10	GEAR, BALANCE WEIGHT	1				
23	90387-15810	COLLAR	1				
24	93306-252XY	BEARING	1				
25	93306-253YB	BEARING	1				
26	90282-05031	KEY, STRAIGHT	1				



1PA1460-M030

FIG. 3 VALVE

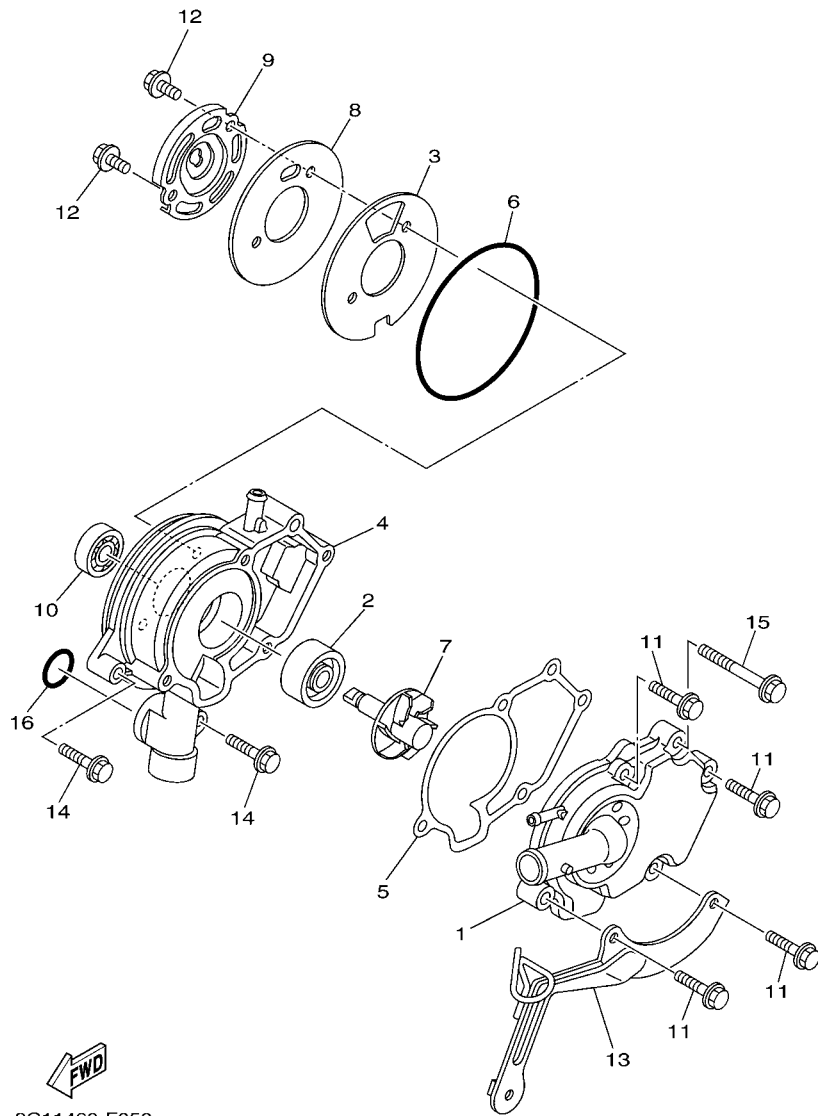
REF. NO.	PART NO.	DESCRIPTION	ZCB2				REMARKS
1	2PV-E2111-00	VALVE, INTAKE	2				
2	2PV-E2121-00	VALVE, EXHAUST	2				
3	1PA-E2119-00	SEAL, VALVE STEM	4				
4	2ND-E2113-00	SPRING, VALVE INNER	4				
5	3S0-E2118-00	LOCK, VALVE SPRING RETAINER	8				
6	1PA-E2117-00	RETAINER, VALVE SPRING	4				
7	50C-E2126-00	SEAT, VALVE SPRING 2	4				
8	2ND-E2151-00	ARM, VALVE ROCKER	1				
9	2ND-E2159-00	SCREW, VALVE ADJUSTING	2				
10	90170-05803	NUT	2				
11	2ND-E2161-00	ARM, VALVE ROCKER 2	1				
12	2ND-E2159-00	SCREW, VALVE ADJUSTING	2				
13	90170-05803	NUT	2				
14	1CK-E2156-00	SHAFT, ROCKER 2	2				UR
	1S7-E2156-00	SHAFT, ROCKER 2	2				UR



2TP1460-P040

FIG. 4 CAMSHAFT & CHAIN

REF. NO.	PART NO.	DESCRIPTION	ZCB2				REMARKS
1	3C1-E2170-00	CAMSHAFT ASSY 1	1				
2	93306-906Y4	.BEARING	1				
3	93210-09806	.O-RING	1				
4	93306-001X6	BEARING	1				
5	93605-06800	PIN, DOWEL	2				
6	2ND-E2280-00	DECOMPRESSION ASSY	1				
7	1S7-E2288-00	CAM, DECOMPRESSION	1				
8	5YP-E2157-00	BOLT	1				
9	1S7-E111F-00	PLATE	1				
10	95022-06010	BOLT, FLANGE	2				
11	94568-H4096	CHAIN	1				
12	1PA-E2231-00	GUIDE, STOPPER 1	1				
13	2PV-E2241-00	GUIDE, STOPPER 2	1				
14	54P-E2228-00	BOLT	1				
15	3C1-E2256-00	COVER, CHAIN	1				
16	2ND-E2210-00	TENSIONER ASSY, CAM CHAIN	1				
17	2PV-E2213-00	GASKET, TENSIONER CASE	1				
18	2PV-E5441-00	HOLDER, CLUTCH CABLE	1				
19	95022-06025	BOLT, FLANGE	2				



3C11460-F050

FIG. 5 WATER PUMP

REF. NO.	PART NO.	DESCRIPTION	ZCB2				REMARKS
1	2PV-E2422-00	COVER, HOUSING	1				
2	93103-10801	OIL SEAL	1				
3	2PV-E2428-00	GASKET, HOUSING COVER 2	1				
4	2PV-E1185-00	COVER, CYLINDER HEAD SIDE 3	1				
5	2ND-E1196-00	GASKET, CYLINDER HEAD SIDE	1				
6	93210-84804	O-RING	1				
7	1S7-E2450-01	IMPELLER SHAFT ASSY	1				
8	1S7-E1951-00	PLATE	1				
9	1S7-E1952-02	PLATE	1				
10	93306-000Y3	BEARING	1				
11	95022-06025	BOLT, FLANGE	4				
12	95022-06012	BOLT, FLANGE	2				
13	3C1-E2443-00	STAY	1				
14	95022-06025	BOLT, FLANGE	2				
15	95022-06050	BOLT, FLANGE	1				
16	93210-19809	O-RING	1				

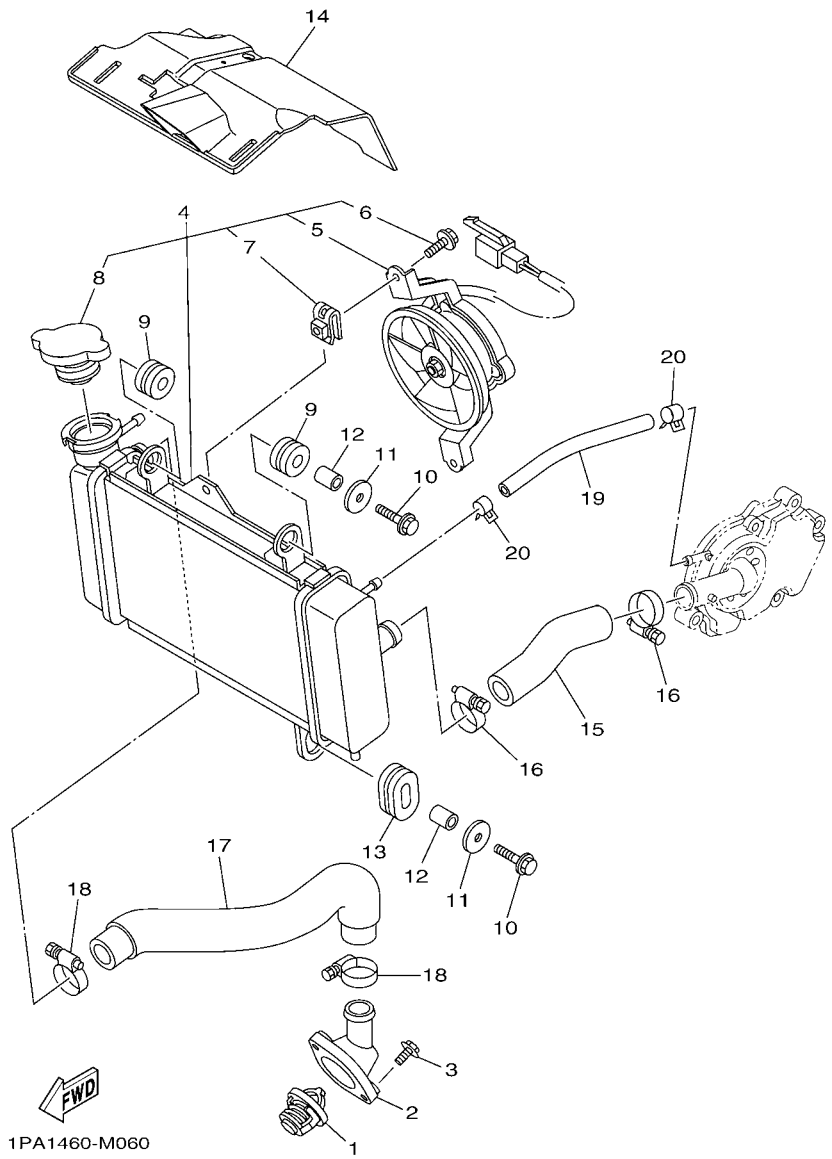


FIG. 6 RADIATOR & HOSE

REF. NO.	PART NO.	DESCRIPTION	ZCB2				REMARKS
1	5YP-12411-00	THERMOSTAT	1				
2	1S7-E2413-00	COVER, THERMOSTAT	1				
3	95022-06020	BOLT, FLANGE	2				
4	3C1-E240A-10	RADIATOR ASSY	1				
5	1S7-E2405-00	.BLOWER ASSY	1				
6	5YP-E2675-00	.BOLT, BLOWER HOLDING	2				
7	5YP-E2671-00	.NUT 1	2				
8	5YP-E2462-00	.CAP, RADIATOR	1				
9	90480-15363	GROMMET	2				
10	95822-06025	BOLT, FLANGE	2				
11	90201-06880	WASHER, PLATE	2				
12	90387-06144	COLLAR	2				
13	90480-01803	GROMMET	1				
14	2TP-E2467-00	COVER, RADIATOR	1				
15	3C1-E2481-00	PIPE 1	1				
16	90450-27805	HOSE CLAMP ASSY	2				
17	3C1-E2482-00	PIPE 2	1				
18	90450-27805	HOSE CLAMP ASSY	2				
19	90445-12804	HOSE	1				
20	90467-10805	CLIP	2				

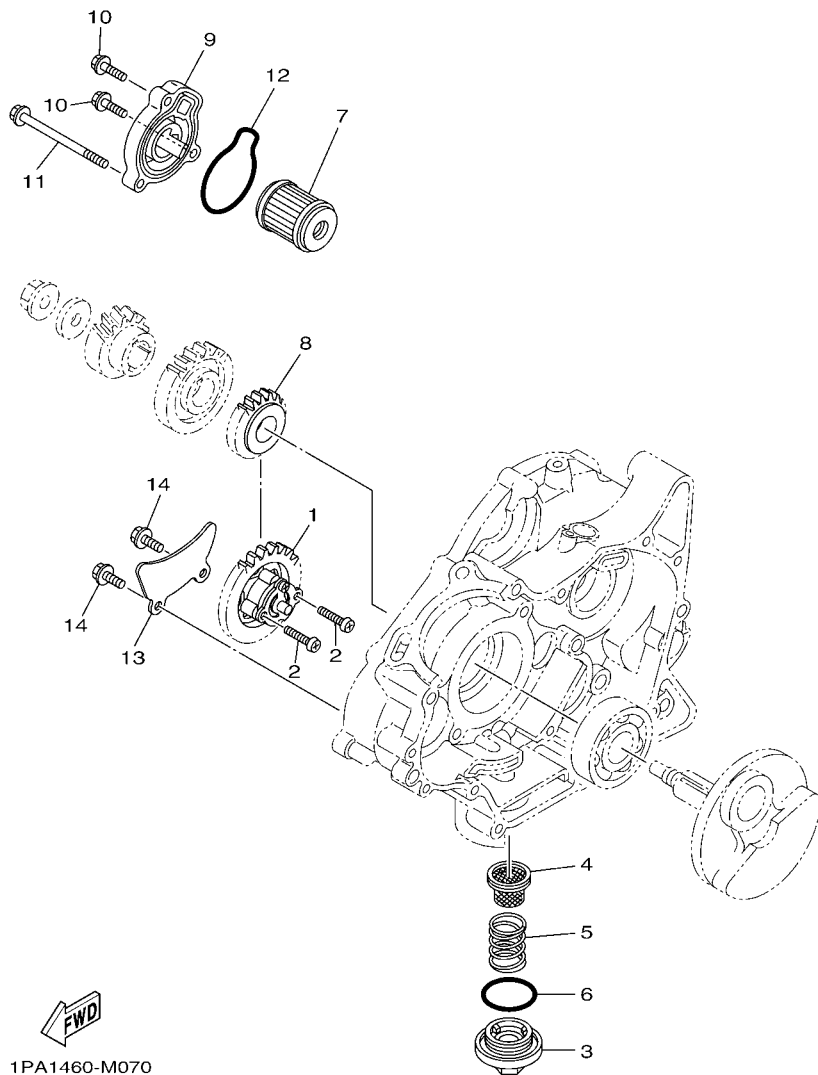
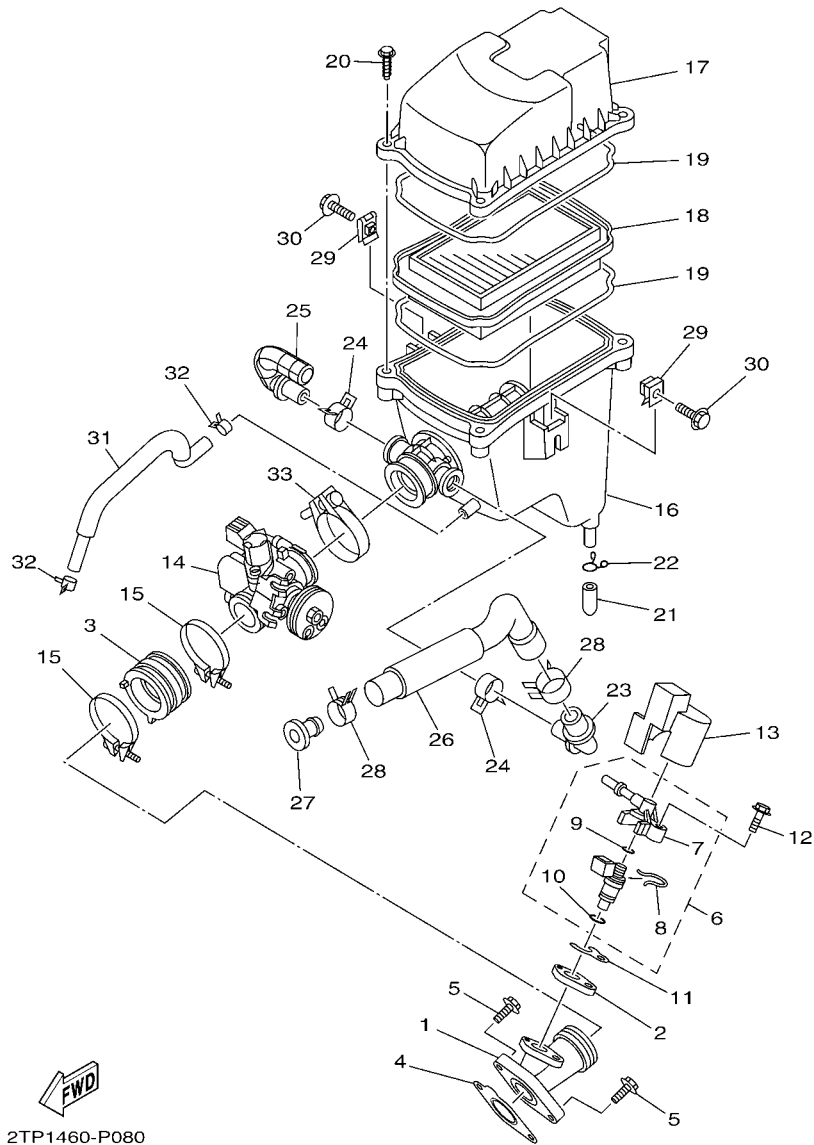


FIG. 7 OIL PUMP

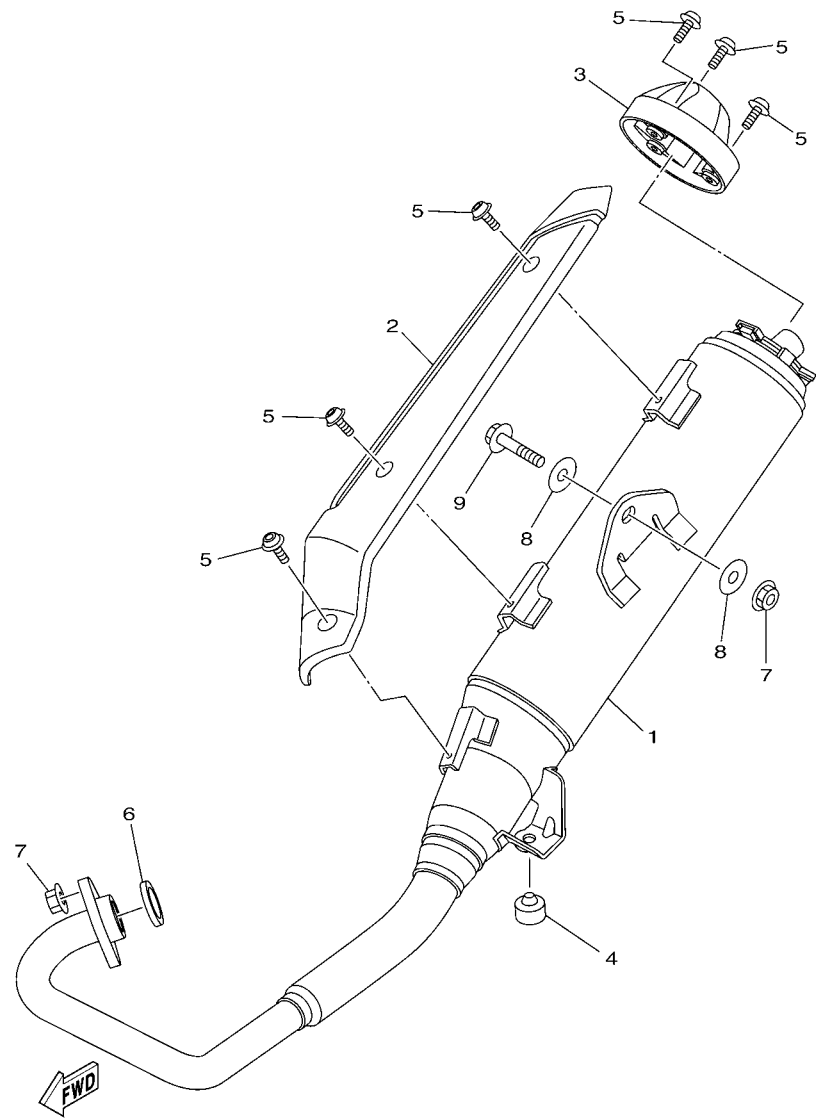
REF. NO.	PART NO.	DESCRIPTION	ZCB2				REMARKS
1	2PV-E3300-00	OIL PUMP ASSY	1				
2	98502-05025	SCREW, PAN HEAD	2				
3	1S7-E5351-00	PLUG, DRAIN	1				
4	38B-E3411-00	STRAINER, OIL	1				UR
	1S7-E3411-00	STRAINER, OIL	1				UR
5	90501-18576	SPRING, COMPRESSION	1				
6	93210-34802	O-RING	1				
7	38B-E3440-00	ELEMENT ASSY, OIL CLEANER	1				UR
	1S7-E3440-00	ELEMENT ASSY, OIL CLEANER	1				UR
8	2PV-E3324-00	GEAR, PUMP DRIVE	1				
9	2TP-E3447-00	COVER, OIL ELEMENT	1				
10	95022-06020	BOLT, FLANGE	2				
11	95022-06080	BOLT, FLANGE	1				
12	93210-54805	O-RING	1				
13	3C1-E3327-00	COVER, PUMP GEAR	1				
14	95022-06012	BOLT, FLANGE	2				



2TP1460-P080

FIG. 8 INTAKE

REF. NO.	PART NO.	DESCRIPTION	ZCB2				REMARKS
1	1PA-E3585-00	MANIFOLD	1				
2	1PA-E3556-00	GASKET, MANIFOLD	1				
3	1PA-E3635-00	JOINT, INTAKE 1	1				
4	2PV-E4199-00	GASKET	1				
5	95022-06020	BOLT, FLANGE	2				
6	1PA-E3770-00	INJECTOR ASSY	1				UR
	5D7-E3770-00	INJECTOR ASSY	1				UR
7	54P-E3938-00	.PIPE	1				
8	54P-E4137-00	.CLIP	1				
9	54P-E4147-00	.O-RING	1				
10	5CA-E4147-00	.O-RING	1				
11	2PV-E3557-00	GASKET	1				
12	95812-06030	BOLT, FLANGE	1				
13	1PA-E3767-00	CAP, INJECTOR	1				
14	2TP-E3750-00	THROTTLE BODY ASSY	1				
15	90450-48803	HOSE CLAMP ASSY	2				
16	1PA-WE441-00	AIR CLEANER CASE COMP.	1				
17	2TP-E4412-00	CAP, CLEANER CASE 1	1				
18	1PA-E4450-00	ELEMENT ASSY, AIR CLEANER	1				
19	1PA-E4452-00	SEAL	2				
20	90163-05803	SCREW, TAPPING	4				
21	5TL-E443E-00	PIPE, DRAIN	1				
22	90467-12800	CLIP	1				
23	3C1-E4485-00	PIPE, JOINT	1				
24	90467-20804	CLIP	2				
25	3C1-E4419-00	PIPE	1				
26	3C1-E441J-00	PIPE, SILENCER	1				



1PA1460-M090

FIG. 9 EXHAUST

REF. NO.	PART NO.	DESCRIPTION	ZCB2				REMARKS
1	2TP-E4703-00	MUFFLER COMP. 1	1				
2	1PA-E4718-00	PROTECTOR, MUFFLER 1	1				
3	1PA-E4799-00	CAP	1				
4	1PA-F7114-00	STOPPER, MAIN STAND	1				
5	90111-06807	BOLT, HEX. SOCKET BUTTON	6				
6	21C-E4613-00	GASKET, EXHAUST PIPE	1				UR
	1S8-E4613-00	GASKET, EXHAUST PIPE	1				UR
7	95702-08500	NUT, FLANGE	3				
8	90201-08612	WASHER, PLATE	2				
9	95812-08040	BOLT, FLANGE	1				

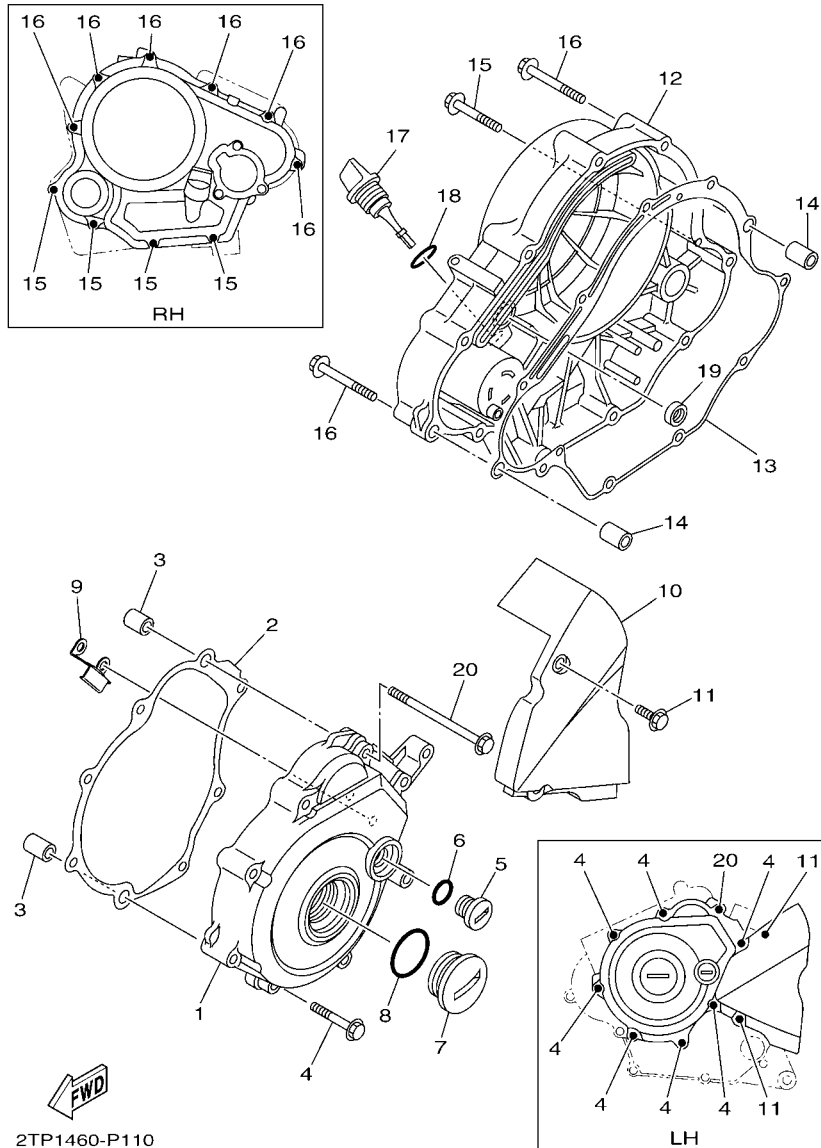
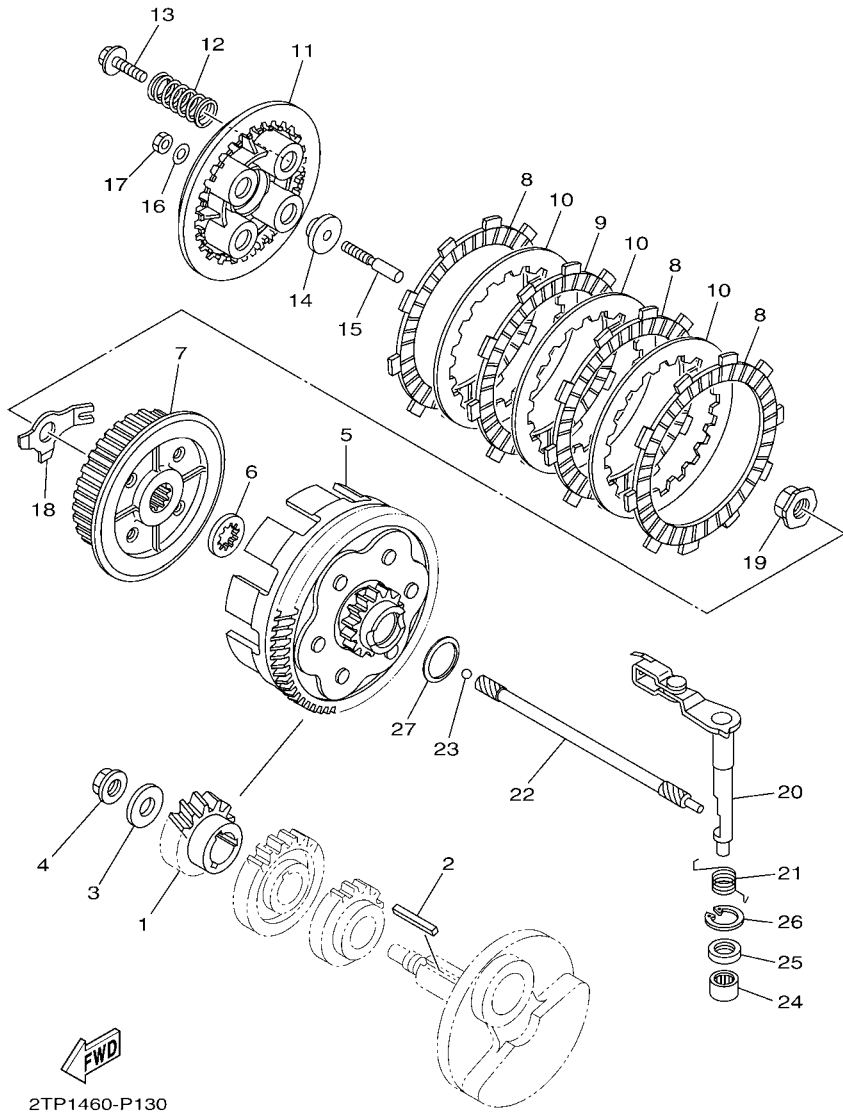


FIG. 11 CRANKCASE COVER 1

REF. NO.	PART NO.	DESCRIPTION	ZCB2				REMARKS
1	2TP-E5411-00	COVER, CRANKCASE 1	1				
2	2PV-E5451-00	GASKET, CRANKCASE COVER 1	1				
3	91810-14809	PIN, DOWEL	2				
4	95022-06040	BOLT, FLANGE	7				
5	90340-14829	PLUG, STRAIGHT SCREW	1				
6	93210-148F8	O-RING	1				
7	90340-32830	PLUG, STRAIGHT SCREW	1				
8	93210-328G3	O-RING	1				
9	2PV-E5113-00	PLATE	1				
10	2TP-E5418-00	COVER, CHAIN CASE	1				
11	95022-06016	BOLT, FLANGE	2				
12	2TP-E5421-00	COVER, CRANKCASE 2	1				
13	2PV-E5461-00	GASKET, CRANKCASE COVER 2	1				
14	91810-14809	PIN, DOWEL	2				
15	95022-06040	BOLT, FLANGE	4				
16	95022-06050	BOLT, FLANGE	6				
17	3C1-E5362-00	PLUG, OIL LEVEL	1				
18	93210-198F9	O-RING	1				
19	93101-10843	OIL SEAL	1				
20	95022-06090	BOLT, FLANGE	1				



2TP1460-P130

FIG. 13 CLUTCH

REF. NO.	PART NO.	DESCRIPTION	ZCB2				REMARKS
1	3C1-E6111-00	GEAR, PRIMARY DRIVE	1				UR
	2PV-E6111-10	GEAR, PRIMARY DRIVE	1				UR
2	38B-E6193-00	KEY, FEATHER	1				UR
	3C1-16193-00	KEY, FEATHER	1				UR
3	90201-12019	WASHER, PLATE	1				
4	90179-12808	NUT	1				
5	2TP-E6150-00	PRIMARY DRIVEN GEAR COMP.	1				
6	45P-E6154-00	PLATE, THRUST 1	1				
7	45P-E6371-00	BOSS, CLUTCH	1				
8	2PV-E6321-00	PLATE, FRICTION	3				
9	2UP-E6321-00	PLATE, FRICTION	1				
10	2PV-E6324-00	PLATE, CLUTCH 1	3				
11	45P-E6351-00	PLATE, PRESSURE 1	1				
12	2PV-E6333-00	SPRING, CLUTCH 1	4				
13	45P-E6337-00	SCREW, SPRING	4				
14	2ND-E6358-00	PLATE, PUSH	1				
15	45P-E6356-00	ROD, PUSH 1	1				
16	3C1-E6144-00	WASHER	1				
17	3C1-E6344-00	NUT, ADJUSTING	1				
18	45P-E6135-00	WASHER, LOCK	1				
19	90179-14001	NUT	1				
20	2TP-E6380-00	PUSH LEVER ASSY	1				
21	2PV-E6345-00	SPRING, RETURN	1				
22	1PA-E6357-00	ROD, PUSH 2	1				
23	93505-16844	BALL	1				
24	93315-112Y8	BEARING	1				
25	93102-12862	OIL SEAL	1				

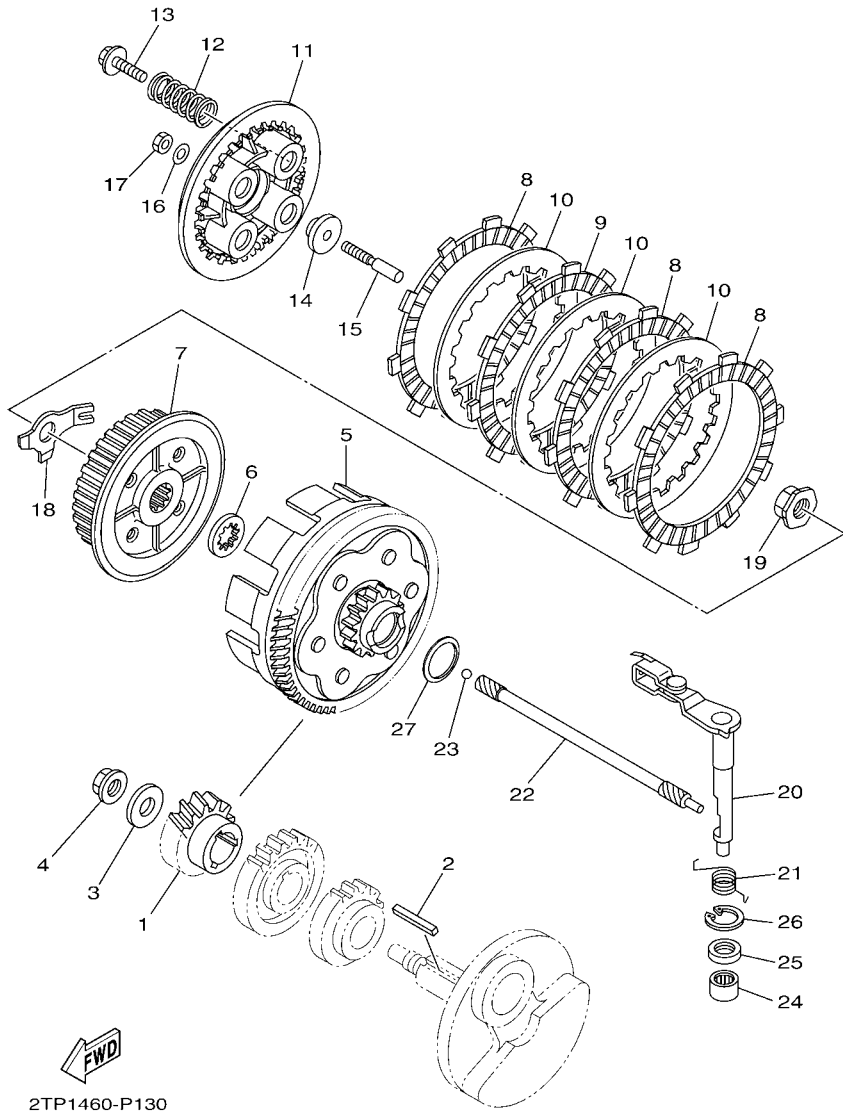
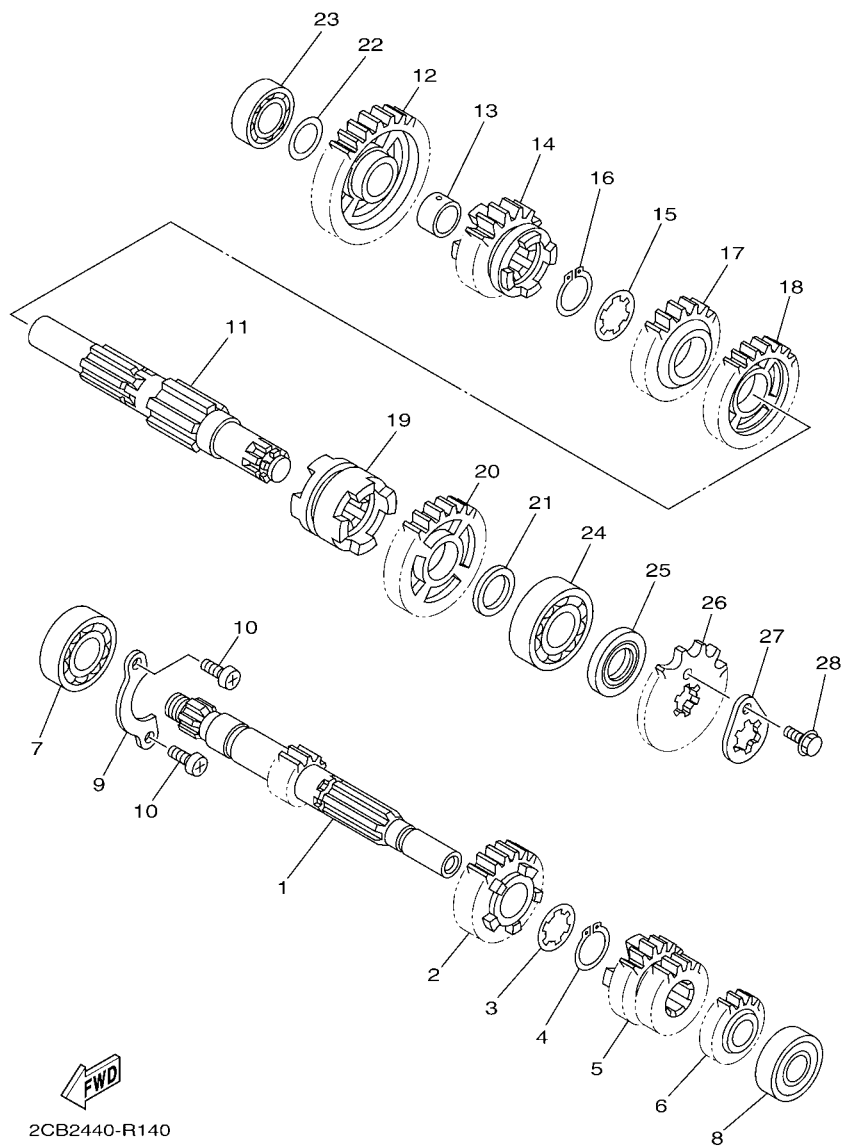


FIG. 13 CLUTCH

REF. NO.	PART NO.	DESCRIPTION	ZCB2				REMARKS
26	99009-20500	CIRCLIP	1				
27	90208-20003	WASHER, CONICAL SPRING	1				



2CB2440-R140

FIG. 14 TRANSMISSION

REF. NO.	PART NO.	DESCRIPTION	2CB2			REMARKS
1	2PV-E7411-00	AXLE, MAIN (12T)	1			UR
	3C1-E7411-10	AXLE, MAIN (12T)	1			UR
	2PV-E7411-10	AXLE, MAIN (12T)	1			UR
	3C1-E7411-20	AXLE, MAIN (12T)	1			UR
2	1PA-E7151-00	GEAR, 5TH PINION (23T)	1			UR
	2PV-E7151-10	GEAR, 5TH PINION (23T)	1			UR
3	90209-17285	WASHER	1			
4	93410-20038	CIRCLIP	1			
5	3C1-E7131-00	GEAR, 3RD PINION (21T/21T)	1			UR
	2PV-E7131-10	GEAR, 3RD PINION (21T/21T)	1			UR
6	3C1-E7121-00	GEAR, 2ND PINION (16T)	1			UR
	2PV-E7121-10	GEAR, 2ND PINION (16T)	1			UR
7	93306-054XB	BEARING	1			UR
	93306-054YM	BEARING	1			UR
8	93306-252YL	BEARING	1			
9	3C1-E7471-00	PLATE, COVER	1			
10	98512-06012	SCREW, PAN HEAD	2			
11	2PV-E7402-20	DRIVE AXLE ASSY	1			
12	3C1-E7211-00	GEAR, 1ST WHEEL (34T)	1			
13	90387-17804	COLLAR	1			
14	2PV-E7251-00	GEAR, 5TH WHEEL (22T)	1			
15	90209-18208	WASHER	1			
16	93410-22039	CIRCLIP	1			
17	3C1-E7241-00	GEAR, 4TH WHEEL (24T)	1			
18	3C1-E7231-00	GEAR, 3RD WHEEL (30T)	1			
19	3C1-E7285-00	CLUTCH, DOG	1			
20	3C1-E7221-00	GEAR, 2ND WHEEL (30T)	1			

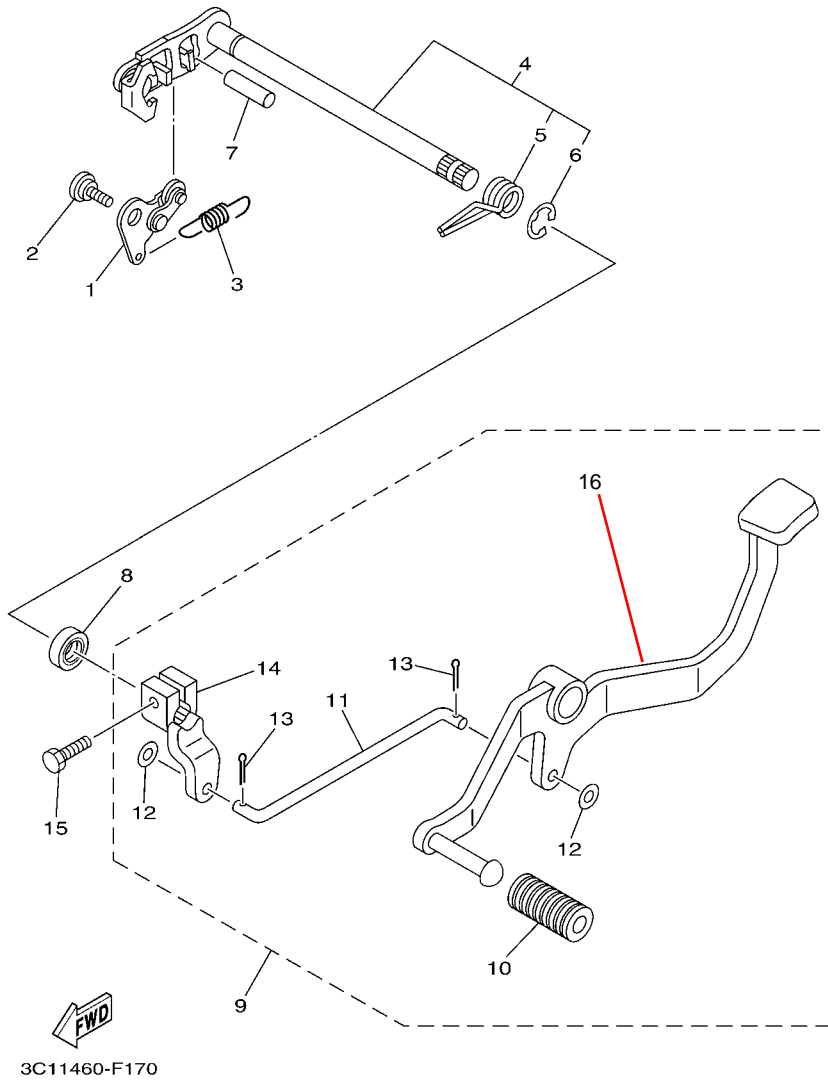


FIG. 16 SHIFT SHAFT

REF. NO.	PART NO.	DESCRIPTION	ZCB2				REMARKS
1	21C-E8140-00	STOPPER LEVER ASSY	1				UR
	2TP-E8140-00	STOPPER LEVER ASSY	1				UR
2	90109-06279	BOLT	1				
3	3C1-E8337-00	SPRING	1				
4	2ND-E8101-00	SHIFT SHAFT ASSY	1				
5	90508-32837	.SPRING, TORSION	1				
6	99002-10600	.CIRCLIP	1				
7	93608-30839	PIN, DOWEL	1				
8	93102-12891	OIL SEAL	1				
9	29B-E8110-00	SHIFT PEDAL ASSY	1				
10	5H3-E8113-00	.COVER, SHIFT PEDAL	1				
11	29B-E8115-00	.ROD, SHIFT	1				
12	92907-06200	.WASHER	2				
13	91401-20012	.PIN, COTTER	2				
14	29B-E8112-00	.ARM, SHIFT	1				
15	97012-06020	BOLT	1				
16	29B-E8111-00	SHIFT ,PEDAL	1				

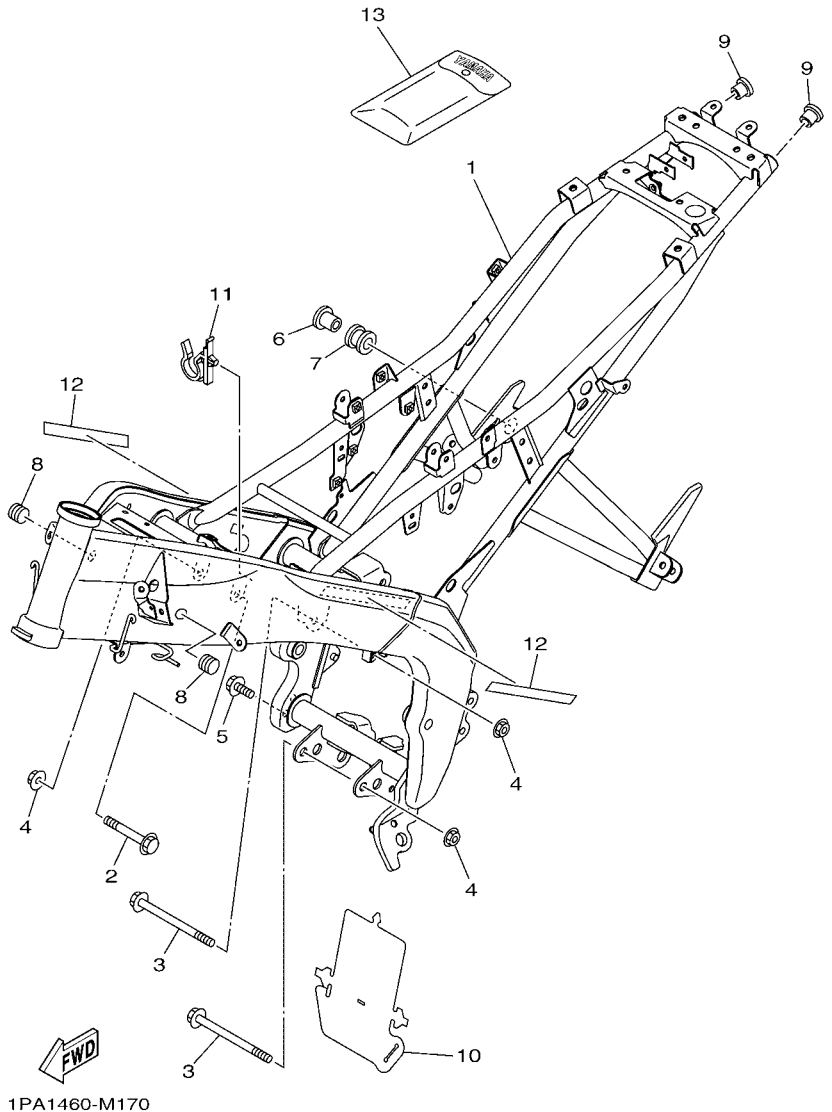


FIG. 17 FRAME

REF. NO.	PART NO.	DESCRIPTION	ZCB2				REMARKS
1	2CB-F1110-10	FRAME COMP.	1				
2	90105-10855	BOLT, FLANGE	1				
3	90105-10886	BOLT, FLANGE	2				
4	90179-10805	NUT	3				
5	95812-08012	BOLT, FLANGE	2				
6	90387-08813	COLLAR	1				
7	1PA-E4747-00	DAMPER, MUFFLER	1				
8	90338-15802	PLUG	2				
9	90338-18122	PLUG	2				
10	3C1-F2327-00	MUD GUARD 1	1				
11	3C1-F1338-00	CLAMP	1				
12	29B-F118E-00	EMBLEM 1	2				UR FOR RM7,MNM3
	2CB-F118E-10	EMBLEM 1	2				UR FOR WM6
13	1PA-F8100-00	TOOL KIT	1				

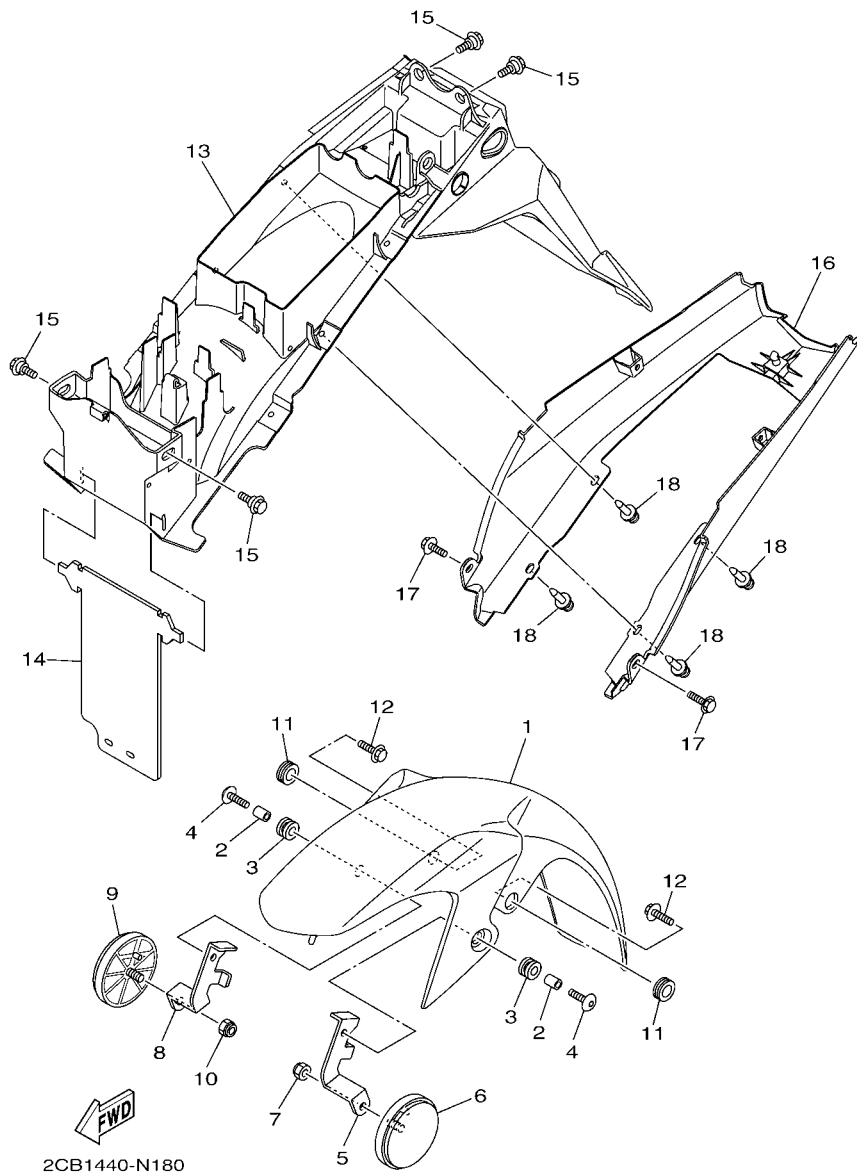


FIG. 18 FENDER

REF. NO.	PART NO.	DESCRIPTION	2CB2				REMARKS
1	2CB-F1511-00-3X	FENDER, FRONT	1				UR FOR RM7
	2CB-F1511-00-4X	FENDER, FRONT	1				UR VPBC5 FOR MNM3
	2CB-F1511-00-5X	FENDER, FRONT	1				UR FOR S3 WM6
2	90387-067V1	COLLAR	2				
3	90480-12805	GROMMET	2				
4	90111-06137	BOLT,HEX. SOCKET BUTTON	2				
5	2CB-F113J-00	BRACKET, REFLECTOR 1	1				
6	1CJ-H5111-00	REFLECTOR, FRONT 1	1				
7	95602-06100	NUT, U	1				
8	2CB-F113K-00	BRACKET, REFLECTOR 2	1				
9	1CJ-H5111-00	REFLECTOR, FRONT 1	1				
10	95602-06100	NUT, U	1				
11	90480-17801	GROMMET	2				
12	90119-068B9	BOLT, WITH WASHER	2				
13	1PA-F1611-00	FENDER, REAR	1				
14	1PA-F1621-00	FLAP	1				
15	90109-06172	BOLT	4				
16	1PA-F163A-00	COVER, REAR FENDER 1	1				
17	90119-06137	BOLT, WITH WASHER	2				
18	90269-06812	RIVET	4				

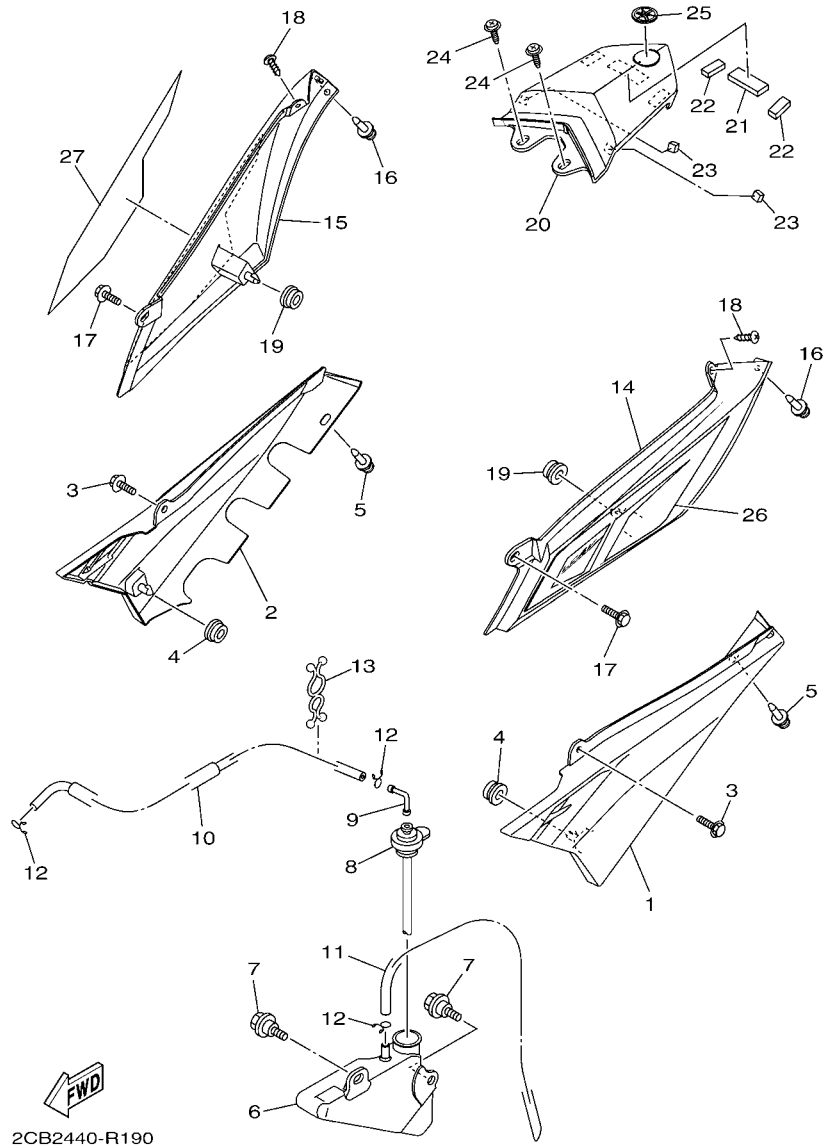


FIG. 19 SIDE COVER

REF. NO.	PART NO.	DESCRIPTION	2CB2				REMARKS
1	1PA-F1711-00	COVER, SIDE 1	1				
2	1PA-F1721-00	COVER, SIDE 2	1				
3	90119-06137	BOLT, WITH WASHER	2				
4	90480-01558	GROMMET	2				
5	90269-06812	RIVET	2				
6	1PA-F1871-00	TANK, RECOVERY	1				
7	90109-06212	BOLT	2				
8	3C1-F1875-00	CAP	1				
9	3C1-F1828-00	ELBOW	1				
10	90445-08831	HOSE	1				
11	90445-08832	HOSE	1				
12	90467-08003	CLIP	3				
13	90464-14807	CLAMP	1				
14	2CB-F1731-00-7M	COVER, SIDE 3	1				UR MDS FOR RM7
	2CB-F1731-00-P3	COVER, SIDE 3	1				UR FOR MNM3
	2CB-F1731-00-P2	COVER, SIDE 3	1				UR FOR WM6
15	2CB-F1741-00-7M	COVER, SIDE 4	1				UR MDS FOR RM7
	2CB-F1741-00-P3	COVER, SIDE 4	1				UR FOR MNM3
	2CB-F1741-00-P2	COVER, SIDE 4	1				UR FOR WM6
16	90269-06812	RIVET	2				
17	90119-06137	BOLT, WITH WASHER	2				
18	97702-50012	SCREW, TAPPING	2				
19	90480-01558	GROMMET	2				
20	2CB-F171E-00-P0	COVER, SIDE 5	1				UR FOR RM7
	2CB-F171E-00-P3	COVER, SIDE 5	1				UR VPBC5 FOR MNM3
	2CB-F171E-00-P4	COVER, SIDE 5	1				UR S3 FOR WM6
21	90520-05816	DAMPER, PLATE	1				

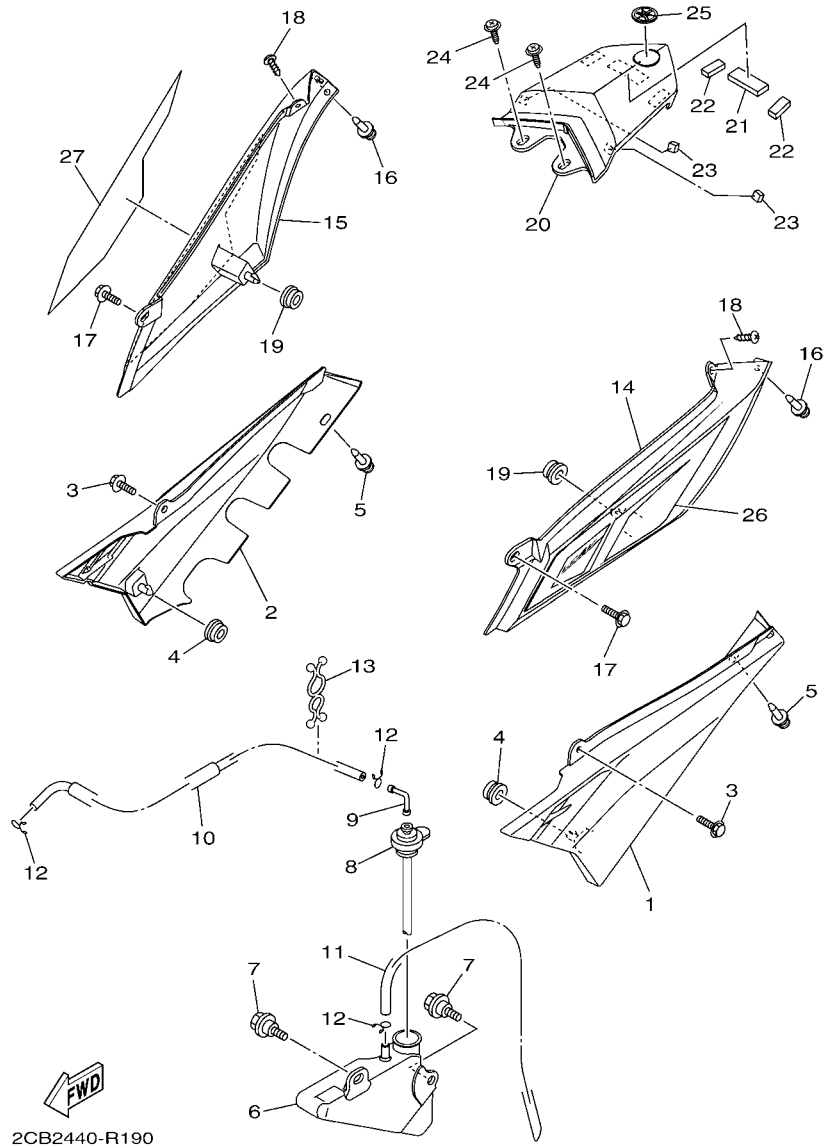
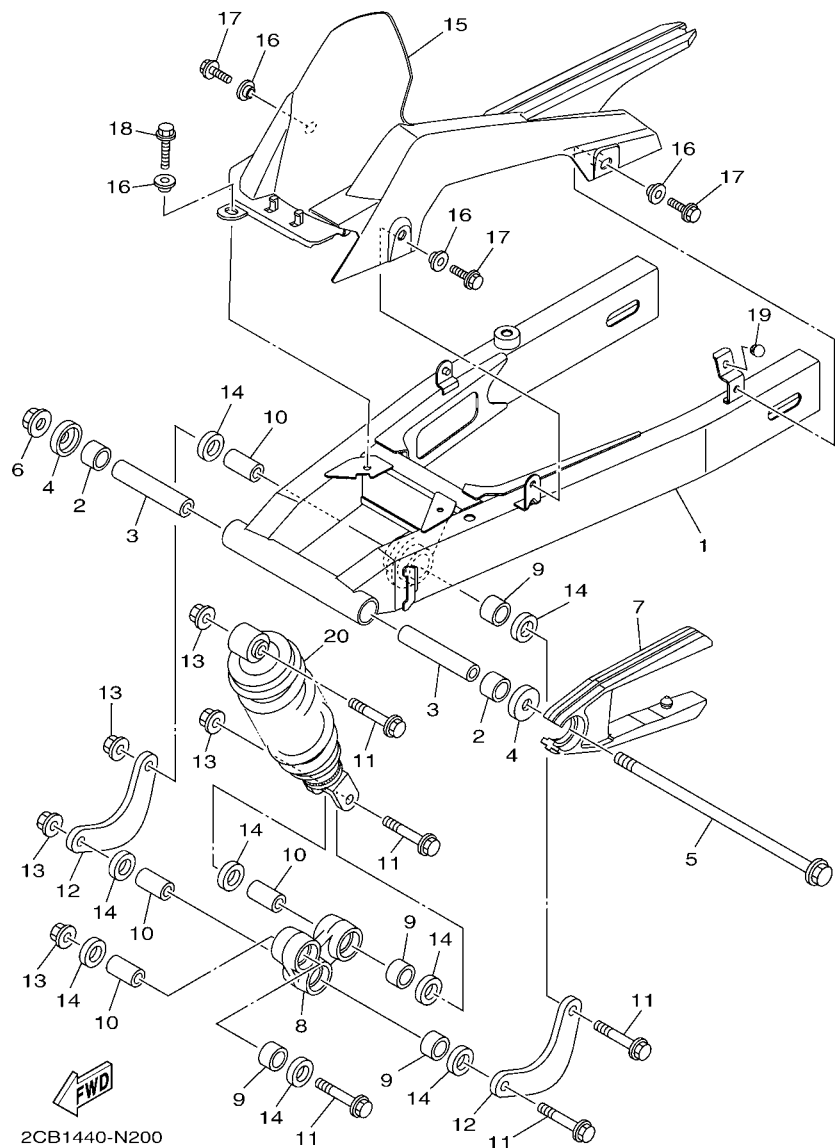


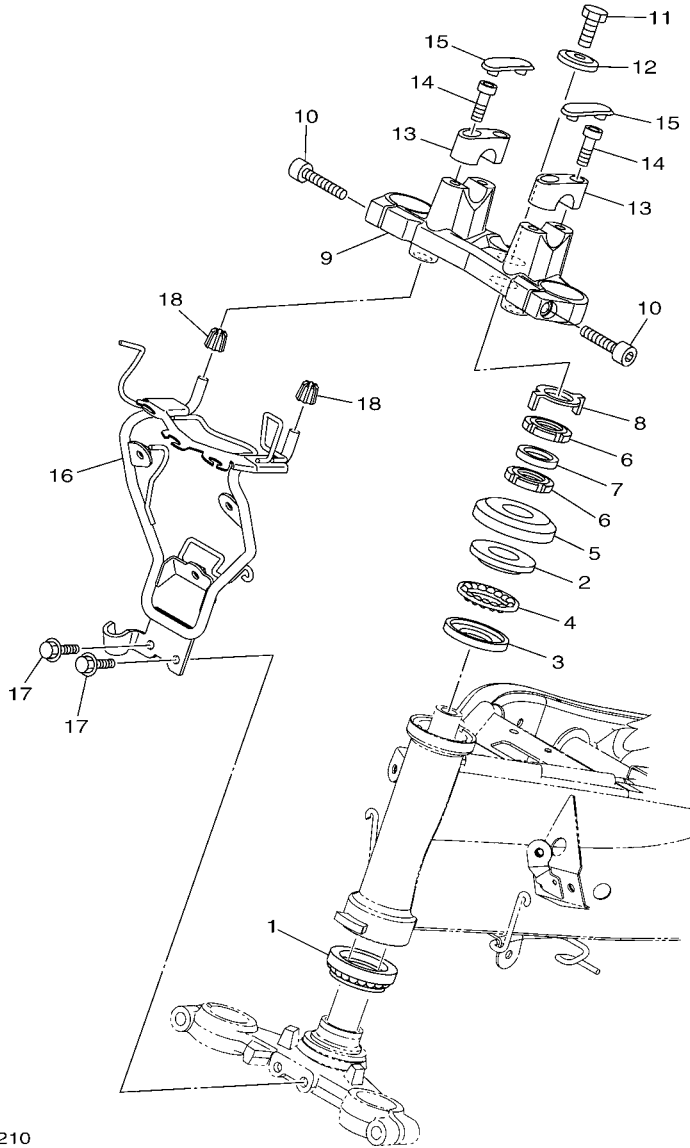
FIG. 19 SIDE COVER

REF. NO.	PART NO.	DESCRIPTION	2CB2				REMARKS
22	90520-05815	DAMPER, PLATE	2				
23	90520-05817	DAMPER, PLATE	2				
24	90159-06860	SCREW, WITH WASHER	2				
25	1PA-F836B-00	TUNING FORK MARK	1				
26	2CB-F17F1-30	GRAPHIC, 1	1				UR FOR RM7
	2CB-F17F1-40	GRAPHIC, 1	1				UR FOR MNM3
	2CB-F17F1-50	GRAPHIC, 1	1				UR FOR WM6
27	2CB-F17F2-30	GRAPHIC, 2	1				UR FOR RM7
	2CB-F17F2-40	GRAPHIC, 2	1				UR FOR MNM3
	2CB-F17F2-50	GRAPHIC, 2	1				UR FOR WM6

FIG. 20 REAR ARM & SUSPENSION



REF. NO.	PART NO.	DESCRIPTION	2CB2				REMARKS
1	1PA-F2110-10	REAR ARM COMP.	1				
2	93317-218Y1	BEARING	2				
3	3C1-F2184-00	BUSH	2				
4	5BP-F2129-01	COVER, THRUST 2	2				
5	1PA-F2141-00	SHAFT, PIVOT	1				
6	95602-12200	NUT, SELF-LOCKING	1				
7	3C1-F2151-00	SEAL, GUARD	1				
8	1PA-F217A-00	ARM, RELAY	1				
9	93315-317Y1	BEARING	4				
10	90387-10814	COLLAR	4				
11	90105-10887	BOLT, FLANGE	5				
12	1PA-F217F-00	ROD, CONNECTING 1	2				
13	90179-10805	NUT	5				
14	93106-17801	OIL SEAL	8				
15	1PA-F1650-00	REAR FENDER COVER COMP.	1				
16	90387-09803	COLLAR	4				
17	95812-06014	BOLT, FLANGE	3				
18	95812-06020	BOLT, FLANGE	1				
19	45P-F1717-00	DAMPER	1				
20	2CB-F2210-00	SHOCK ABSORBER ASSY, REAR	1				



1PA1460-M210

FIG. 21 STEERING

REF. NO.	PART NO.	DESCRIPTION	ZCB2				REMARKS
1	5BP-F3873-01	BEARING, STEERING UPPER	1				
2	1PA-F3411-00	RACE, BALL 1	1				
3	1PA-F3412-00	RACE, BALL 2	1				
4	5TL-2341E-00	RETAINER, BALL BEARING (16)	1				
5	5BP-F3416-00	COVER, BALL RACE 2	1				
6	90179-25810	NUT	2				
7	90202-26142	WASHER, PLATE	1				
8	1PA-F3418-00	WASHER, SPECIAL	1				
9	1PA-F3435-00	CROWN, HANDLE	1				
10	9131L-08030	BOLT	2				
11	90105-10006	BOLT, FLANGE	1				
12	90209-10020	WASHER	1				
13	3KA-F3441-10	HOLDER, HANDLE UPPER	2				
14	9131L-08030	BOLT	4				
15	3KA-F3469-00	CAP, BOLT	2				
16	1PA-F3174-00	STAY, HEADLIGHT	1				
17	95022-06012	BOLT, FLANGE	2				
18	45P-F317J-00	DAMPER 1	2				

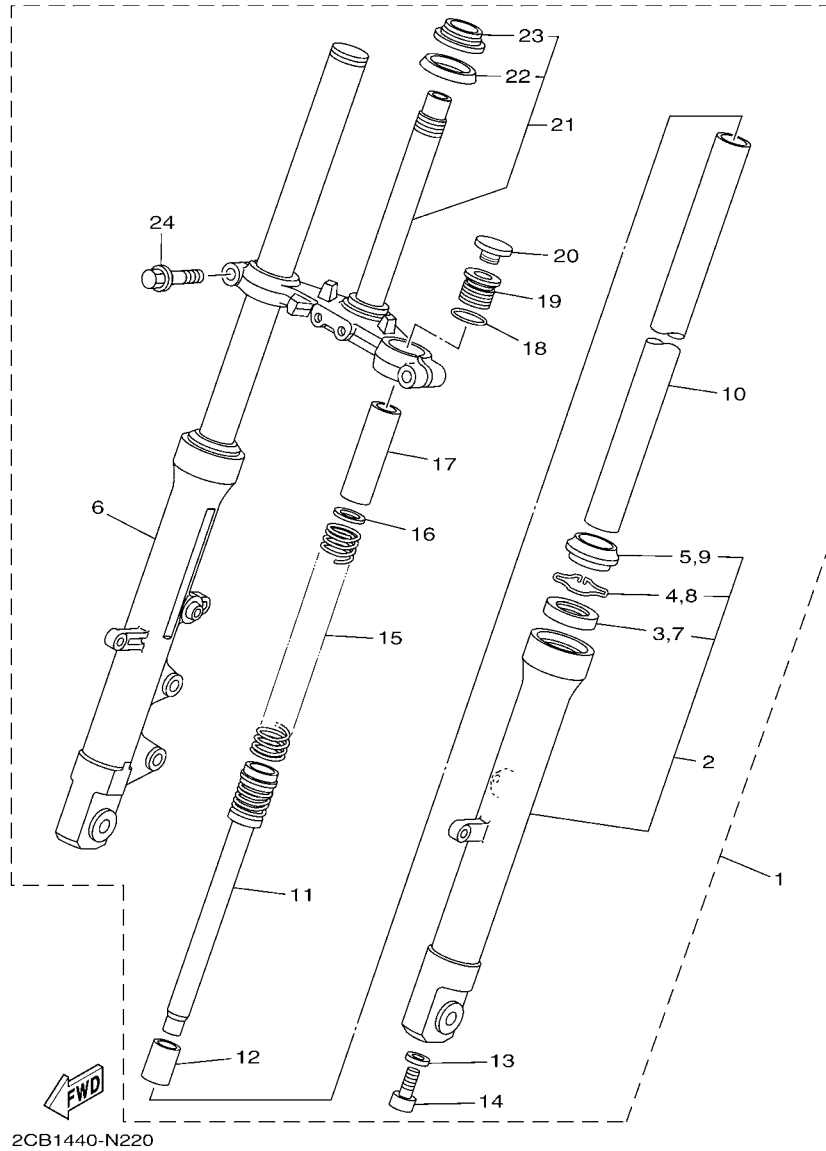
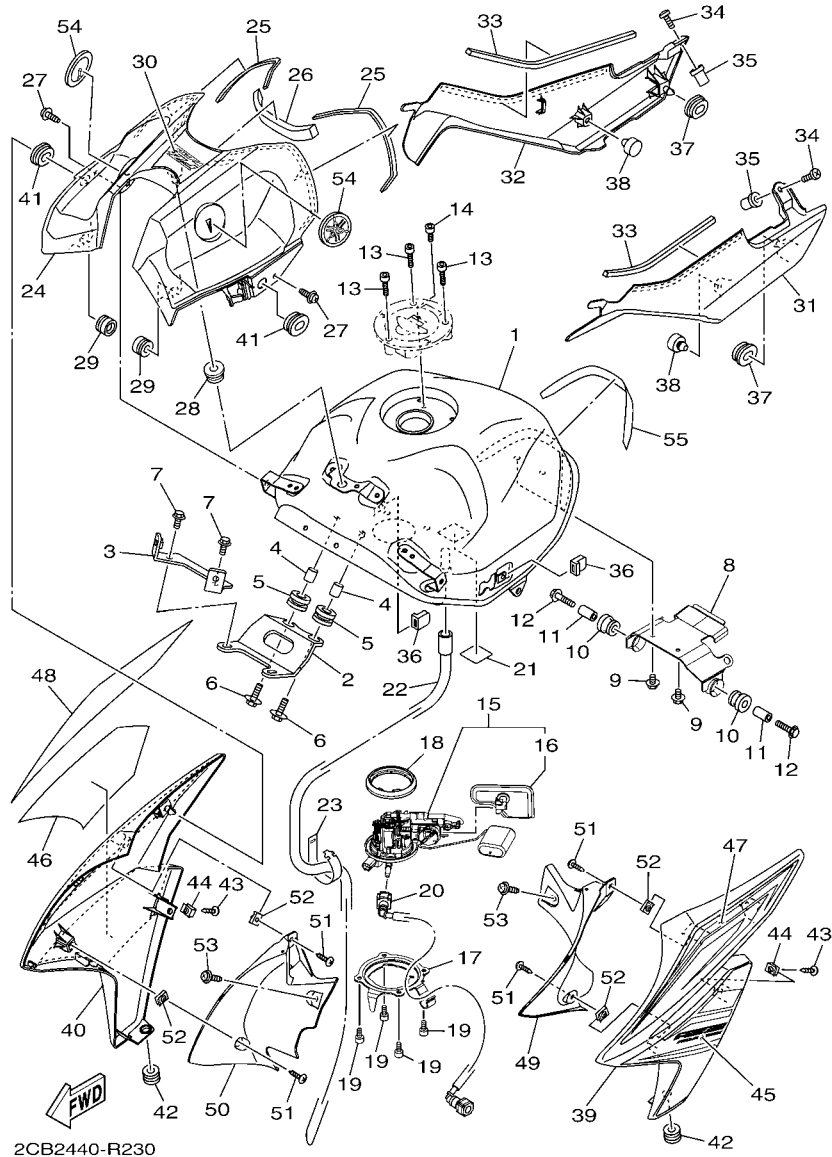


FIG. 22 FRONT FORK

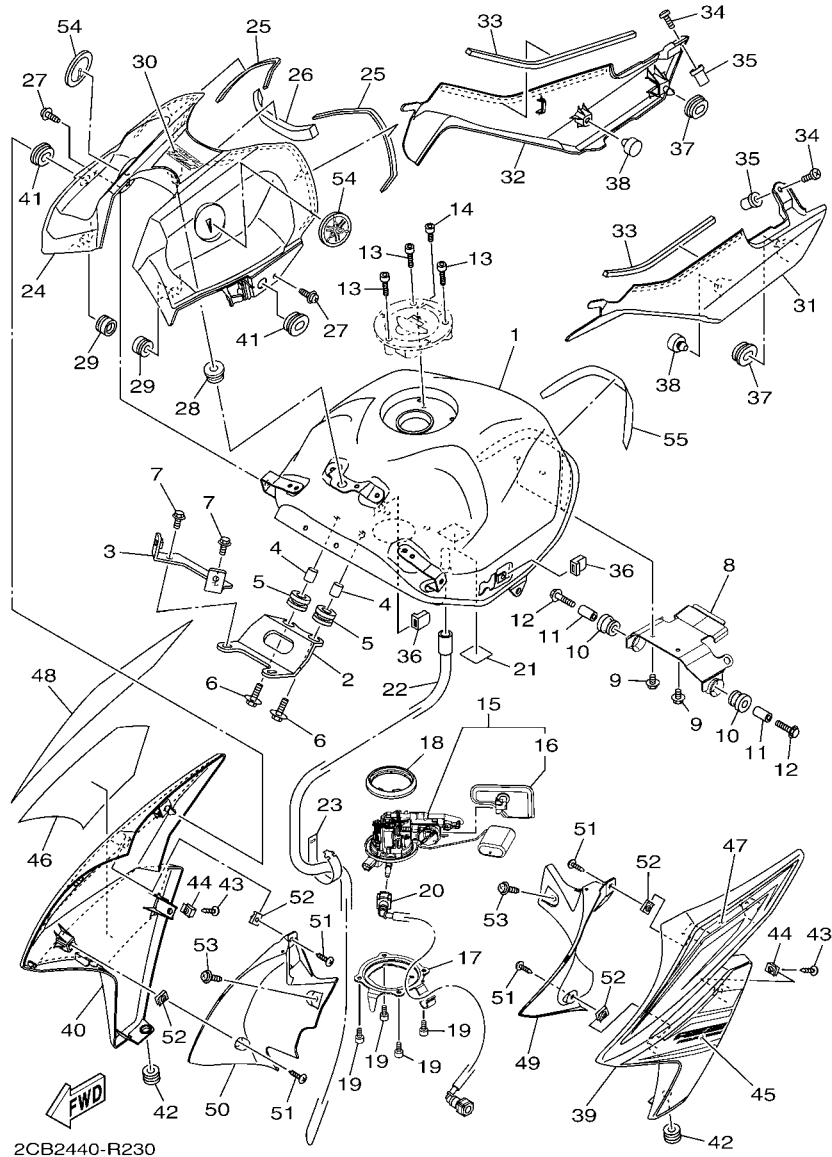
REF. NO.	PART NO.	DESCRIPTION	2CB2				REMARKS
1	2CB-F3100-00	FRONT FORK ASSY	1				
2	1PA-F3126-00	.TUBE, OUTER (L.H)	1				
3	4HF-F3145-00	..OIL SEAL	1				
4	22W-F3156-L0	..RING, SNAP	1				
5	4HF-F3144-00	..SEAL, DUST	1				
6	1PA-F3136-00	.TUBE, OUTER 2	1				
7	4HF-F3145-00	..OIL SEAL	1				
8	22W-F3156-L0	..RING, SNAP	1				
9	4HF-F3144-00	..SEAL, DUST	1				
10	1PA-F3110-00	.INNER TUBE COMP.1	2				
11	1PA-F3170-00	.CYLINDER COMP., FRONT FORK	2				
12	2JK-F3173-00	.SPINDLE, TAPER	2				
13	509-F3158-L0	.GASKET	2				
14	31D-F3181-50	.BOLT, HEXAGON SOCKET HEAD	2				
15	1PA-F3141-00	.SPRING, FRONT FORK	2				
16	2JK-F3149-01	.WASHER, SPRING UPPER	2				
17	5BP-F3118-10	.SPACER	2				
18	2JK-F3114-00	.GASKET	2				
19	5BP-F3111-10	.BOLT, CAP	2				
20	2N4-F3168-00	.CAP, FRONT FORK	2				
21	29B-F3340-00	.UNDER BRACKET COMP.	1				
22	29B-F3462-00	..SEAL, DUST	1				
23	5BP-F3875-00	..BEARING, STEERING LOWER	1				
24	2JK-F3346-00	.BOLT 1	2				



2CB2440-R230

FIG. 23 FUEL TANK

REF. NO.	PART NO.	DESCRIPTION	2CB2		REMARKS
1	2CB-F4110-00-P0	FUEL TANK COMP.	1		UR FOR RM7
	2CB-F4110-00-P3	FUEL TANK COMP.	1		UR FOR MNM3
	2CB-F4110-00-P2	FUEL TANK COMP.	1		UR FOR WM6
2	1PA-F412Y-01	BRACKET, TANK FITTING	1		
3	1PA-F411F-00	PLATE, FITTING	1		
4	90387-06892	COLLAR	2		
5	90480-15483	GROMMET	2		
6	90119-06234	BOLT, WITH WASHER	2		
7	95812-06014	BOLT, FLANGE	2		
8	1PA-F413Y-00	BRACKET, TANK FITTING	1		
9	95822-06010	BOLT, FLANGE	2		
10	90480-18549	GROMMET	2		
11	90387-06890	COLLAR	2		
12	95812-06030	BOLT, FLANGE	2		
13	90110-05806	BOLT, HEXAGON SOCKET HEAD	3		
14	91312-05010	BOLT	1		
15	1PA-E3907-10	FUEL PUMP COMP.	1		
16	54P-E3915-00	.FILTER, FUEL SUCTION	1		
17	1PA-F4491-00	BRACKET, FUEL PUMP	1		
18	54P-F414G-10	SEAL	1		
19	91312-05010	BOLT	4		
20	1PA-E3971-01	PIPE, FUEL 1	1		
21	1PA-F4595-00	PROTECTOR	1		
22	1PA-F4312-00	PIPE 2	1		
23	1PA-F179E-00	BAND	1		
24	2CB-F171A-00-P3	COVER, TOP	1		UR FOR RM7
	2CB-F171A-00-P4	COVER, TOP	1		UR VPBC5 FOR MNM3



2CB2440-R230

FIG. 23 FUEL TANK

REF. NO.	PART NO.	DESCRIPTION	2CB2			REMARKS
24	2CB-F171A-00-P5	COVER, TOP	1			UR S3 FOR WM6
25	90520-03819	DAMPER, PLATE	2			
26	90520-15802	DAMPER, PLATE	1			
27	90159-06860	SCREW, WITH WASHER	2			
28	90480-13867	GROMMET	1			
29	90480-12823	GROMMET	2			
30	2CB-F4258-30	GRAPHIC, FUEL TANK 11	1			UR FOR RM7, MNM3
	2CB-F4258-40	GRAPHIC, FUEL TANK 11	1			UR FOR WM6
31	1PA-F4129-00	COVER, SIDE 1	1			
32	1PA-F4139-00	COVER, SIDE 2	1			
33	90520-05014	DAMPER, PLATE	2			
34	98902-05016	SCREW, BIND	2			
35	90179-05849	NUT	2			
36	1PA-F411J-00	DAMPER, SIDE COVER	2			
37	90480-01558	GROMMET	2			
38	1PA-F1717-00	DAMPER	2			
39	2CB-F137W-00-7M	SCOOP, AIR 1	1			UR MDS FOR RM7
	2CB-F137W-00-P3	SCOOP, AIR 1	1			UR FOR MNM3
	2CB-F137W-00-P2	SCOOP, AIR 1	1			UR FOR WM6
40	2CB-F137X-00-7M	SCOOP, AIR 2	1			UR MDS FOR RM7
	2CB-F137X-00-P3	SCOOP, AIR 2	1			UR FOR MNM3
	2CB-F137X-00-P2	SCOOP, AIR 2	1			UR FOR WM6
41	90480-01558	GROMMET	2			
42	90480-10623	GROMMET	2			
43	90159-06860	SCREW, WITH WASHER	2			
44	90183-06818	NUT, SPRING	2			
45	2CB-F4244-30	GRAPHIC, FUEL TANK 1	1			UR FOR RM7

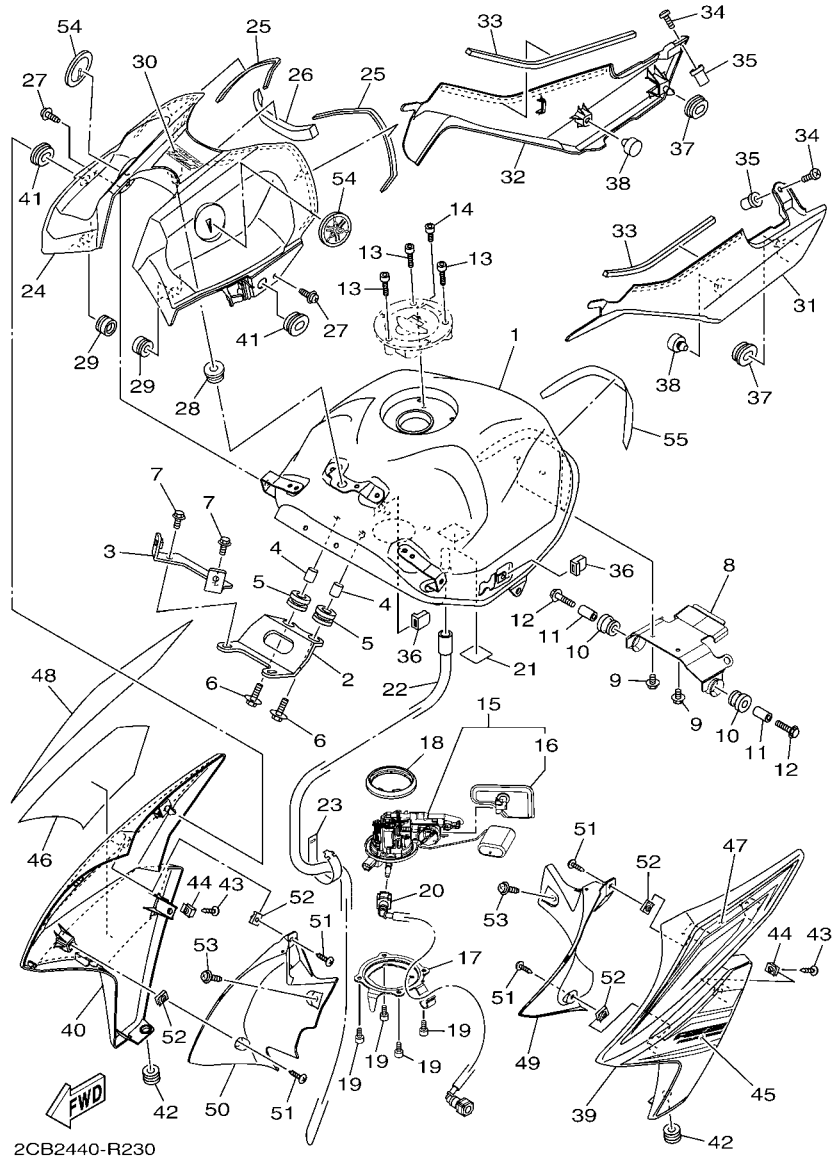
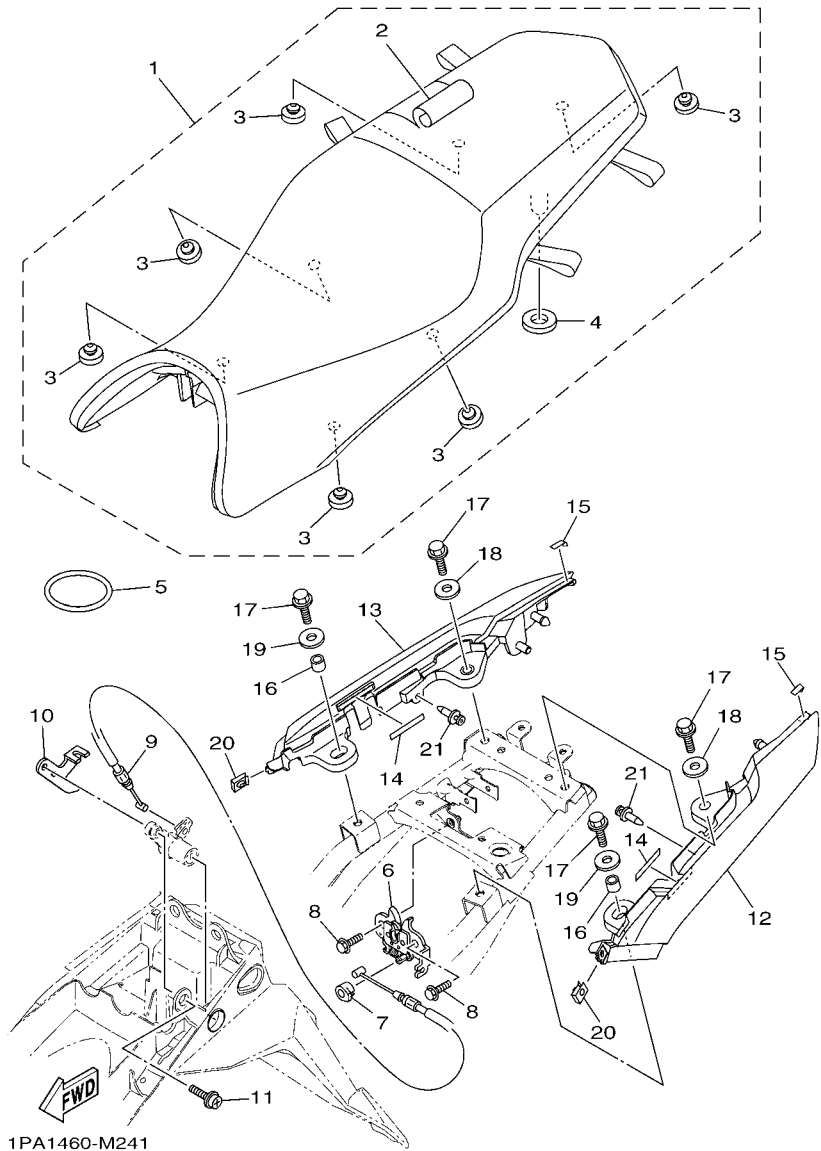


FIG. 23 FUEL TANK

REF. NO.	PART NO.	DESCRIPTION	2CB2			REMARKS
45	2CB-F4244-40	GRAPHIC, FUEL TANK 1	1			UR FOR MNM3
	2CB-F4244-50	GRAPHIC, FUEL TANK 1	1			UR FOR WM6
46	2CB-F4245-30	GRAPHIC, FUEL TANK 2	1			UR FOR RM7
	2CB-F4245-40	GRAPHIC, FUEL TANK 2	1			UR FOR MNM3
	2CB-F4245-50	GRAPHIC, FUEL TANK 2	1			UR FOR WM6
47	2CB-F4246-30	GRAPHIC 3	1			UR FOR RM7
	2CB-F4246-40	GRAPHIC 3	1			UR FOR MNM3
	2CB-F4246-50	GRAPHIC 3	1			UR FOR WM6
48	2CB-F4247-30	GRAPHIC	1			UR FOR RM7
	2CB-F4247-40	GRAPHIC	1			UR FOR MNM3
	2CB-F4247-50	GRAPHIC	1			UR FOR WM6
49	1PA-F137U-00	GUIDE, AIR 1	1			
50	1PA-F137V-00	GUIDE, AIR 2	1			
51	97702-50012	SCREW, TAPPING	4			
52	90183-05823	NUT, SPRING	4			
53	90159-06860	SCREW, WITH WASHER	2			
54	1PA-F413B-00	EMBLEM	2			
55	1PA-F4141-00	PROTECTOR, FUEL TANK	1			



1PA1460-M241

FIG. 24 SEAT

REF. NO.	PART NO.	DESCRIPTION	ZCB2				REMARKS
1	1PA-F4730-00	DOUBLE SEAT ASSY	1				
2	1PA-F4731-00	.COVER, SEAT	1				
3	3C1-F4741-00	.PAD, SEAT	6				
4	45P-F4763-00	.PAD, SEAT 2	1				
5	5TL-H2131-00	BAND, BATTERY	1				
6	1S7-F4780-00	SEAT LOCK ASSY	1				
7	1S7-F4768-00	STOPPER	1				
8	95022-06010	BOLT, FLANGE	2				
9	1PA-F478E-00	CABLE, SEAT LOCK	1				
10	1PA-F117K-00	STAY, LOCK	1				
11	90159-06054	SCREW, WITH WASHER	1				
12	2CB-F470J-00-7M	ASSIST GRIP ASSY., 1	1				UR MDS FOR RM7
	2CB-F470J-00-P2	ASSIST GRIP ASSY., 1	1				UR FOR WM6
	2CB-F470J-00-P3	ASSIST GRIP ASSY., 1	1				UR FOR MNM3
13	2CB-F470K-00-7M	ASSIST GRIP ASSY., 2	1				UR MDS FOR RM7
	2CB-F470K-00-P2	ASSIST GRIP ASSY., 2	1				UR FOR WM6
	2CB-F470K-00-P3	ASSIST GRIP ASSY., 2	1				UR FOR MNM3
14	1PA-F476U-00	PROTECTOR 1	2				
15	1PA-F476V-00	PROTECTOR,2	2				
16	90387-08085	COLLAR	2				
17	95822-08025	BOLT, FLANGE	4				
18	90201-08871	WASHER, PLATE	2				
19	90201-088N6	WASHER, PLATE	2				
20	90183-05823	NUT, SPRING	2				
21	90269-06812	RIVET	2				

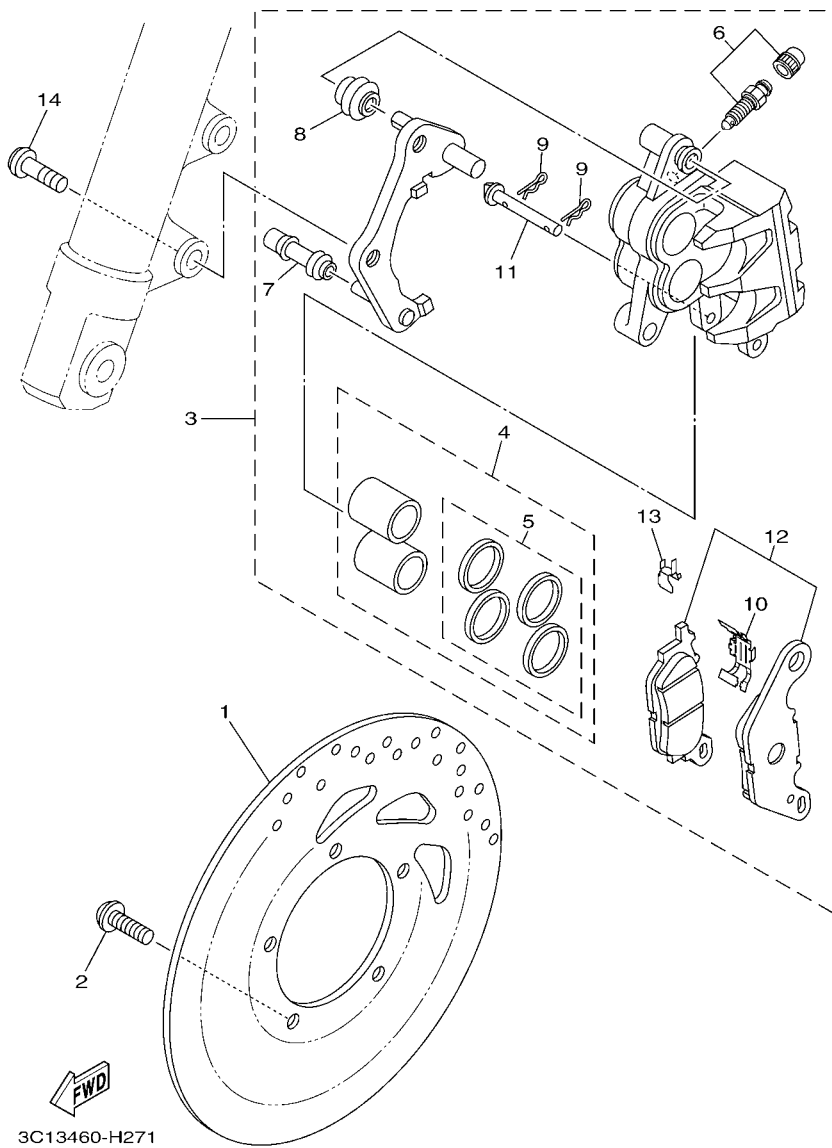


FIG. 26 FRONT BRAKE CALIPER

REF. NO.	PART NO.	DESCRIPTION	ZCBZ				REMARKS
1	3C1-F582U-00	DISK, BRAKE (RIGHT)	1				
2	90111-08815	BOLT, HEX. SOCKET BUTTON	5				
3	1PA-F580U-01	CALIPER ASSY (RIGHT)	1				
4	3C1-F5802-00	.PISTON ASSY, CALIPER	1				
5	3C1-F5803-50	..CALIPER SEAL KIT	1				
6	4C9-W0048-00	.BLEED SCREW KIT	1				
7	5YP-F5937-00	.BOOT 2	1				
8	5YP-F5917-00	.BOOT, CALIPER	1				
9	5YP-F5925-01	.CLIP	2				
10	5P0-F5919-00	.SUPPORT, PAD	1				
11	5YP-F5924-00	.PIN, PAD	1				
12	3C1-F5805-10	.BRAKE PAD KIT	1				
13	5YP-F5939-00	.CLIP, PAD	1				
14	90149-10802	SCREW	2				

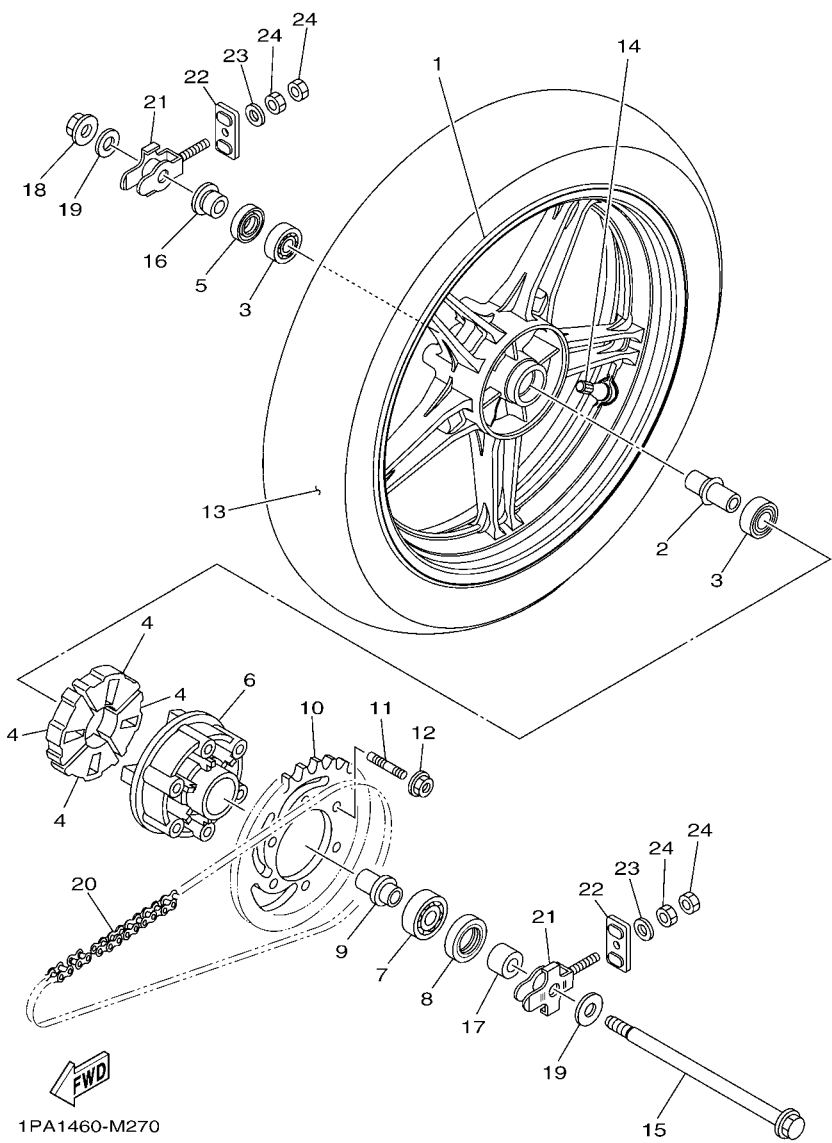
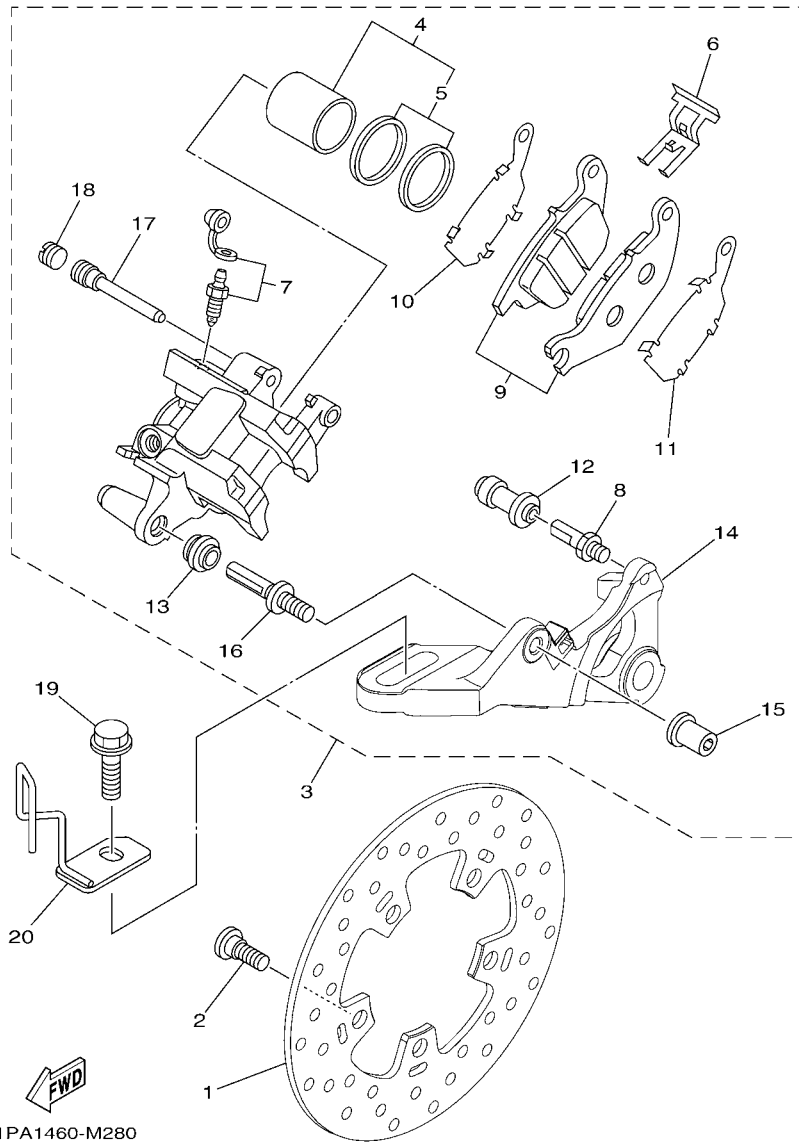


FIG. 27 REAR WHEEL

REF. NO.	PART NO.	DESCRIPTION	ZCB2				REMARKS
1	1PA-F5338-20-4X	CAST WHEEL, REAR	1				YB
2	1PA-F530S-00	COLLAR ASSY	1				
3	93306-252X7	BEARING	2				
4	45P-F5364-00	DAMPER	4				
5	93106-22808	OIL SEAL	1				
6	3C1-F5366-00-33	CLUTCH, HUB (0033,YB)	1				YB
7	93306-004XV	BEARING	1				
8	93106-26815	OIL SEAL	1				
9	1PA-F5377-00	COLLAR, WHEEL	1				
10	1PA-F5443-00	SPROCKET, DRIVEN (43T)	1				
11	90116-08826	BOLT, STUD	6				
12	95602-08200	NUT, U FLANGE	6				
13	94112-17804	TIRE (120/70-17 M/C 58P D102A)	1				DUNLOP
14	93900-00817	VALVE, RIM (TR412)	1				
15	1PA-F5381-00	AXLE, WHEEL	1				
16	1PA-F5383-00	COLLAR, WHEEL	1				
17	1PA-F5386-00	COLLAR, SPROCKET AXLE	1				
18	95602-14200	NUT, SELF-LOCKING	1				
19	90201-15030	WASHER, PLATE	2				
20	94568-D6122	CHAIN (RK 428KPO X 122LE)	1				
21	1PA-F5388-00	PULLER, CHAIN 1	2				
22	1PA-F2174-00	END 1	2				
23	92902-08600	WASHER, PLATE	2				
24	95302-08600	NUT, HEXAGON	4				



1PA1460-M280

FIG. 28 REAR BRAKE CALIPER

REF. NO.	PART NO.	DESCRIPTION	ZCB2				REMARKS
1	1PA-F582W-00	DISK, REAR BRAKE 2	1				
2	90109-08087	BOLT	5				
3	1PA-F580W-00	CALIPER ASSY, REAR 2	1				
4	50C-W0057-00	.PISTON ASSY, CALIPER	1				
5	3GD-W0047-00	..CALIPER SEAL KIT	1				
6	50C-F5919-00	.SUPPORT, PAD	1				
7	50C-W0048-00	.BLEED SCREW KIT	1				
8	50C-F5914-00	.PIN, SLIDE	1				
9	1PA-W0046-00	.BRAKE PAD KIT 2	1				
10	50C-F5827-00	.SHIM, CALIPER	1				
11	50C-F5828-00	.SHIM, CALIPER	1				
12	50C-F5937-00	.BOOT 2	1				
13	50C-F5917-00	.BOOT, CALIPER	1				
14	1PA-F5921-00	.BRACKET, SUPPORT	1				
15	50C-F5961-00	.NUT	1				
16	50C-2536G-00	.PIN	1				
17	50C-F5933-00	.PIN HANGER	1				
18	50C-F5916-00	.PLUG	1				
19	95812-10030	BOLT, FLANGE	1				
20	1PA-F587A-10	HOLDER, BRAKE HOSE	1				

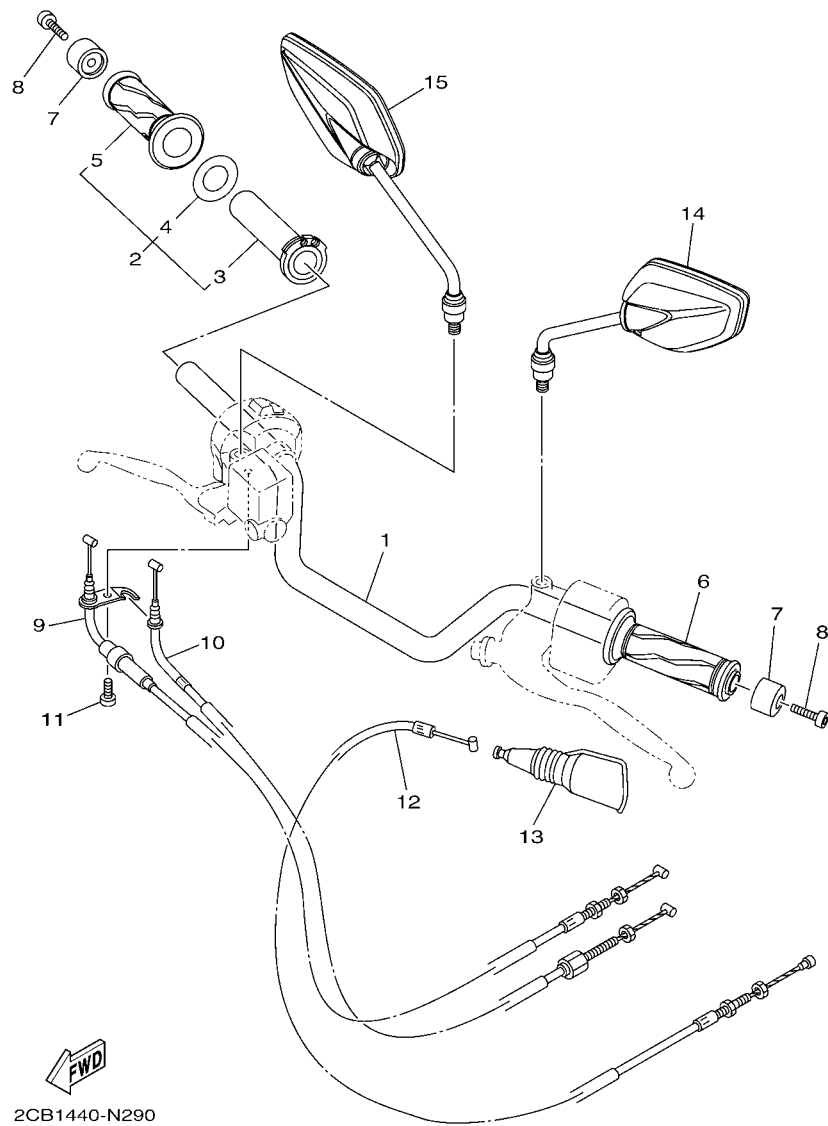
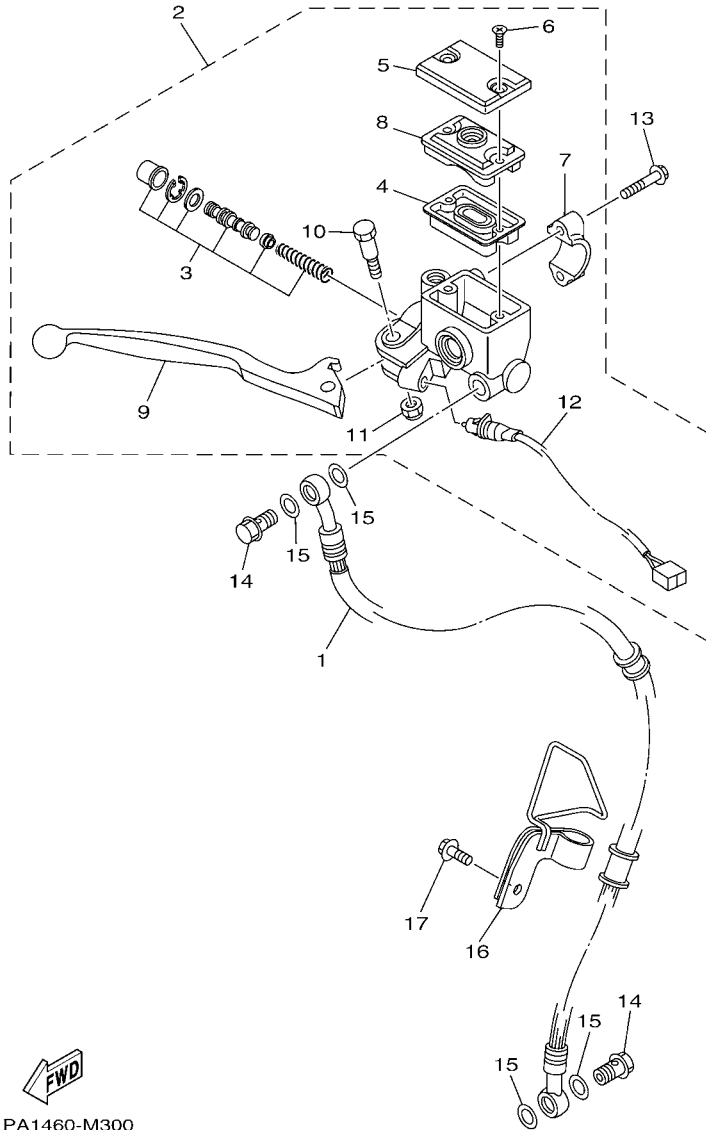


FIG. 29 STEERING HANDLE & CABLE

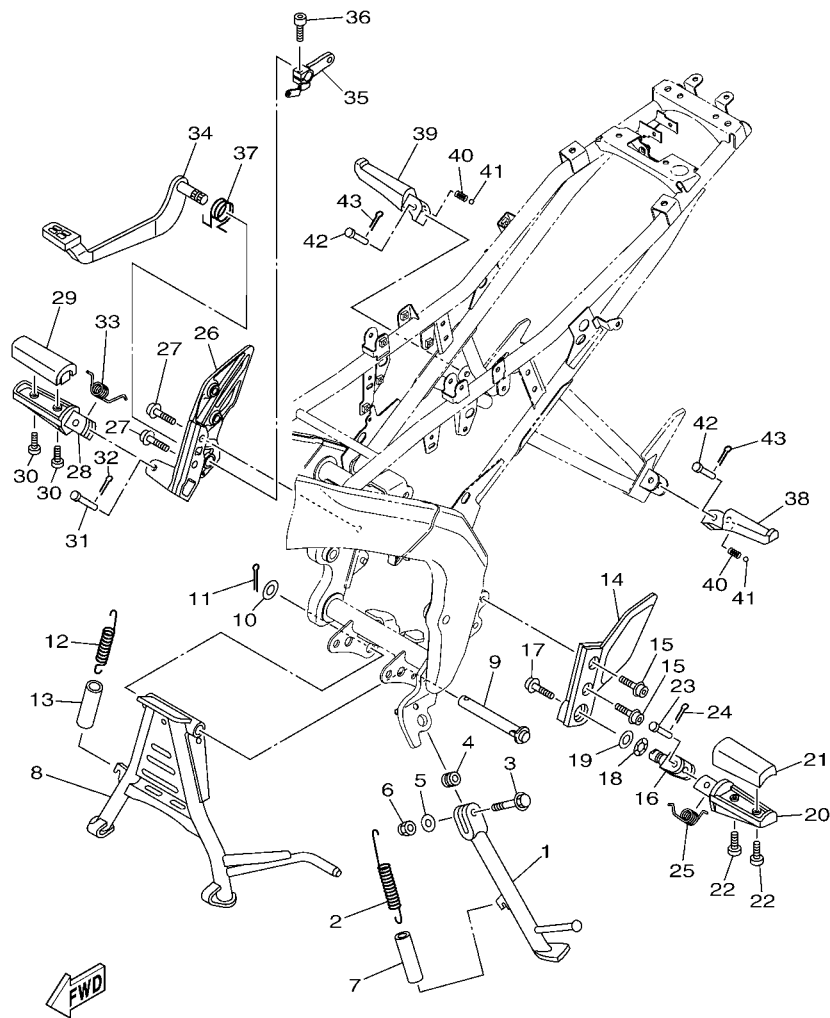
REF. NO.	PART NO.	DESCRIPTION	2CB2				REMARKS
1	1PA-F6111-00	HANDLEBAR	1				
2	1PA-F6240-00	GRIP ASSY	1				
3	1PA-F6243-00	.TUBE, THROTTLE GUIDE	1				
4	90201-261L1	.WASHER, PLATE	1				
5	1PA-F6242-00	.GRIP (RIGHT)	1				
6	1DY-F6241-00	GRIP	1				
7	1PA-F6246-10	END, GRIP	2				
8	91312-06030	BOLT	2				
9	1PA-F6311-00	CABLE, THROTTLE 1	1				UR
	1PA-F6311-10	CABLE, THROTTLE 1	1				UR
10	1PA-F6312-00	CABLE, THROTTLE 2	1				UR
	1PA-F6312-10	CABLE, THROTTLE 2	1				UR
11	98502-05012	SCREW, PAN HEAD	1				
12	2TP-F6335-00	CABLE, CLUTCH	1				
13	3RS-F6372-00	COVER, HANDLE LEVER 1	1				
14	2CB-F6280-20	REAR VIEW MIRROR ASSY (LEFT)	1				
15	2CB-F6290-20	REAR VIEW MIRROR ASSY (RIGHT)	1				




 1PA1460-M300

FIG. 30 FRONT MASTER CYLINDER

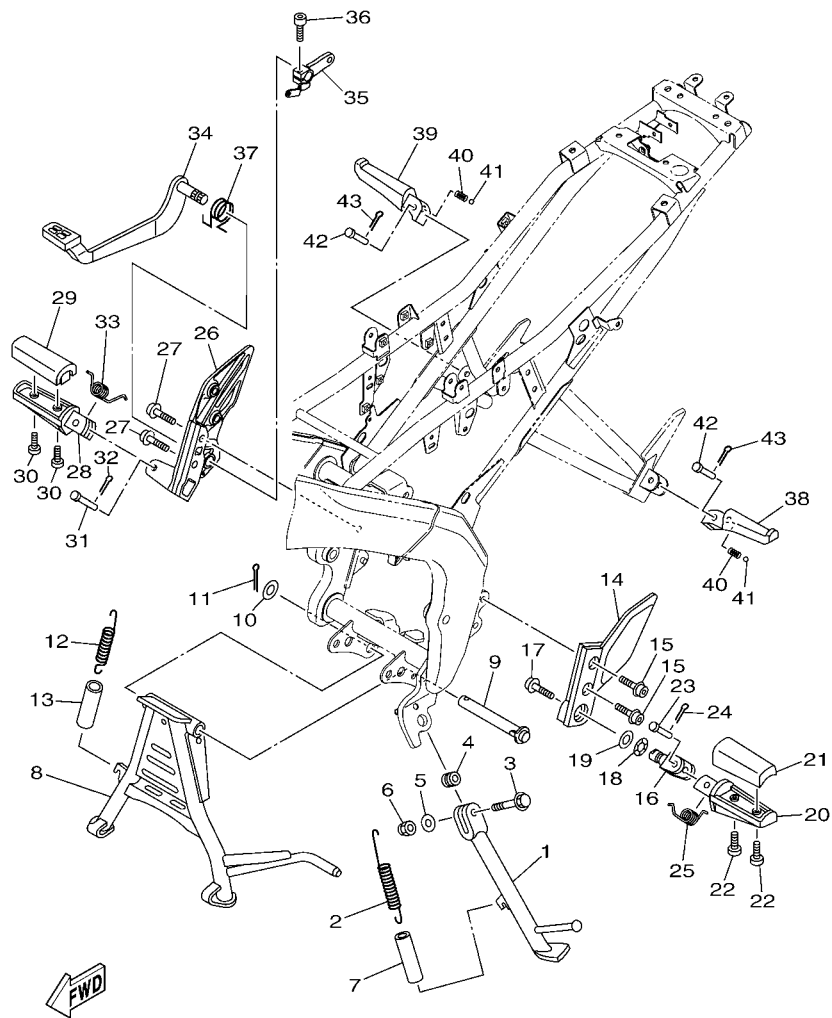
REF. NO.	PART NO.	DESCRIPTION	ZCBZ				REMARKS
1	3C1-F5872-00	HOSE, BRAKE 1	1				
2	3C1-F583T-03	MASTER CYLINDER ASSY	1				
3	5P0-W0041-00	.CYLINDER KIT, MASTER	1				
4	3RW-F5854-00	.DIAPHRAGM, RESERVOIR	1				
5	3C1-F5852-00	.CAP, RESERVOIR	1				
6	36Y-2589H-00	.SCREW	2				
7	3RW-F5867-00	.BRACKET, MASTER CYLINDER	1				
8	3C1-F5855-00	.BUSH,DIAPHRAGM	1				
9	3C1-H3922-00	.LEVER 2	1				
10	90109-06577	.BOLT	1				
11	95602-06100	.NUT, U	1				
12	5BP-H3980-10	.FRONT STOP SWITCH ASSY	1				
13	95027-06025	BOLT, FLANGE	2				
14	90401-10812	BOLT, UNION	2				
15	90201-10118	WASHER, PLATE	4				
16	1PA-F5886-10	HOLDER, BRAKE HOSE	1				
17	95022-06016	BOLT, FLANGE	1				



1PA1460-M310

FIG. 31 STAND & FOOTREST

REF. NO.	PART NO.	DESCRIPTION	ZCB2				REMARKS
1	3C1-F7311-00	STAND, SIDE	1				
2	90506-28800	SPRING, TENSION	1				
3	90105-10888	BOLT, FLANGE	1				
4	90387-10003	COLLAR	1				
5	92902-10600	WASHER, PLATE	1				
6	95612-10100	NUT, U	1				
7	90445-21848	HOSE (L70)	1				
8	3C1-F7111-10	STAND, MAIN	1				
9	1PA-F7112-00	SHAFT, MAIN STAND	1				
10	90201-16813	WASHER, PLATE	1				
11	91401-30030	PIN, COTTER	1				
12	90506-35812	SPRING, TENSION	1				
13	90445-22800	HOSE	1				
14	3C1-F7452-00	BRACKET, FOOTREST 1	1				
15	90110-08803	BOLT, HEXAGON SOCKET HEAD	2				
16	5BP-F7411-00	FOOTREST 1	1				
17	90110-10026	BOLT, HEXAGON SOCKET HEAD	1				
18	90206-17084	WASHER, WAVE	1				
19	90201-173U5	WASHER, PLATE	1				
20	5BP-F7451-00	FOOTREST	1				
21	3C1-F7413-00	COVER, FOOTREST	1				
22	98502-05014	SCREW, PAN HEAD	2				
23	90240-08144	PIN, CLEVIS	1				
24	91401-25015	PIN, COTTER	1				
25	90508-183B9	SPRING, TORSION	1				
26	1PA-F7462-00	BRACKET, FOOTREST 2	1				
27	90110-08803	BOLT, HEXAGON SOCKET HEAD	2				



1PA1460-M310

FIG. 31 STAND & FOOTREST

REF. NO.	PART NO.	DESCRIPTION	ZCBB2				REMARKS
28	5BP-F7461-00	FOOTREST	1				
29	3C1-F7413-00	COVER, FOOTREST	1				
30	98502-05014	SCREW, PAN HEAD	2				
31	90240-08145	PIN, CLEVIS	1				
32	91401-25015	PIN, COTTER	1				
33	90508-183B9	SPRING, TORSION	1				
34	1PA-F7211-00	PEDAL, BRAKE	1				
35	1PA-F7262-00	LEVER	1				
36	91312-06020	BOLT	1				
37	3C1-F7216-00	SPRING, RETURN	1				
38	3C1-F7431-01	FOOTREST, REAR 1	1				
39	3C1-F7441-01	FOOTREST, REAR 2	1				
40	90501-12743	SPRING, COMPRESSION	2				
41	93501-04830	BALL	2				
42	91701-08035	PIN	2				
43	90252-23800	PIN, COTTER	2				

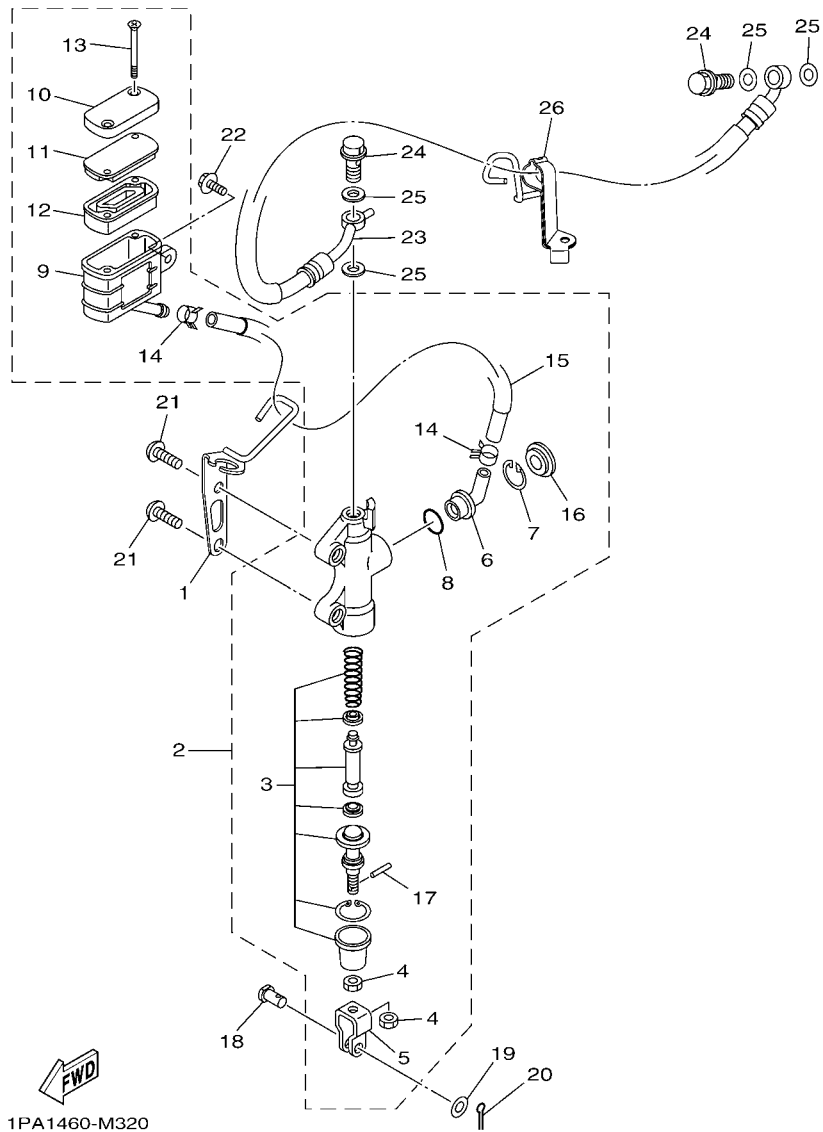
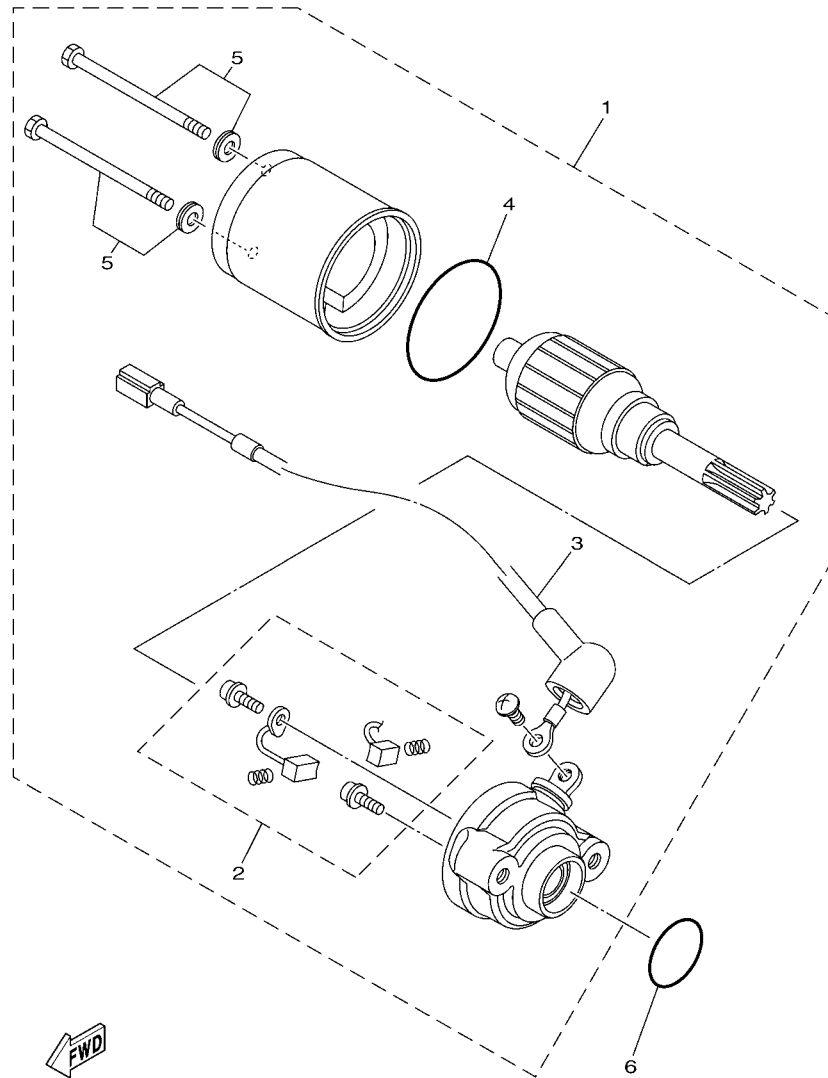


FIG. 32 REAR MASTER CYLINDER

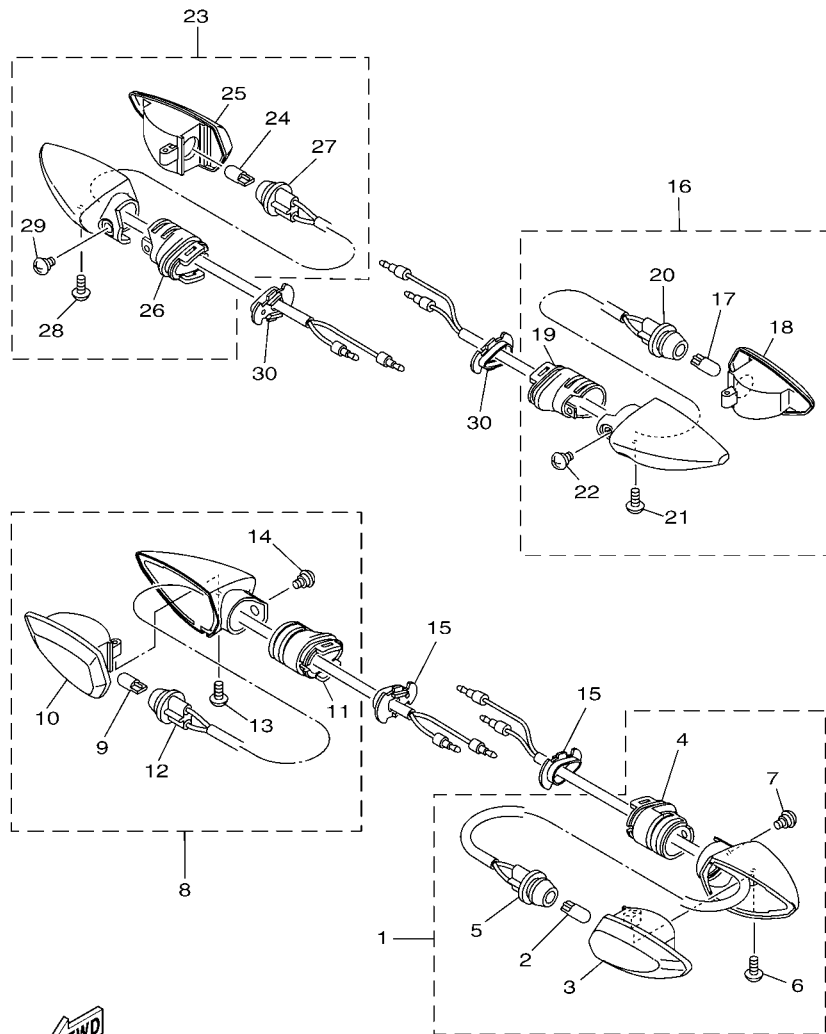
REF. NO.	PART NO.	DESCRIPTION	ZCBZ				REMARKS
1	1PA-F144G-00	STAY, STOP SWITCH	1				
2	1PA-F583V-00	RR. MASTER CYLINDER ASSY.	1				
3	1PA-W0042-00	.CYLINDER KIT, MASTER	1				
4	95301-08700	.NUT	2				
5	50C-F7222-00	.JOINT	1				
6	50C-F582A-00	.JOINT	1				
7	50C-F5866-00	.CIRCLIP	1				
8	93210-15620	.O-RING	1				
9	1PA-F5894-00	.TANK, RESERVOIR	1				
10	1PA-F5852-00	.CAP, RESERVOIR	1				
11	1PA-F585B-00	.PLATE, DIAPHRAGM	1				
12	20P-F5854-00	.DIAPHRAGM, RESERVOIR	1				
13	98707-04045	.SCREW, FLAT HEAD	2				
14	90467-12085	.CLIP	2				
15	1CK-F5895-00	.HOSE, RESERVOIR	1				
16	50C-F589A-00	.COVER, DUST	1				
17	5BU-27234-00	.PIN, BRAKE ROD	1				
18	90240-08005	PIN, CLEVIS	1				
19	90201-08066	WASHER, PLATE	1				
20	91401-20012	PIN, COTTER	1				
21	92012-08025	BOLT, BUTTON HEAD	2				
22	90119-06137	BOLT, WITH WASHER	1				
23	1PA-F5873-00	HOSE, BRAKE 2	1				
24	90401-10812	BOLT, UNION	2				
25	90201-10118	WASHER, PLATE	4				
26	1PA-F5887-00	HOLDER, BRAKE HOSE	1				



2ND1422-P370

FIG. 34 STARTING MOTOR

REF. NO.	PART NO.	DESCRIPTION	ZCB2				REMARKS
1	2PV-H1800-00	STARTING MOTOR ASSY	1				
2	5TP-H1801-00	.BRUSH SET	1				
3	5D7-H183G-00	.CORD COMP.	1				
4	5D9-H1861-00	.GASKET	1				
5	5D9-H1828-00	.SCREW 2	2				
6	93210-26805	O-RING	1				




 2CB1440-N350

FIG. 35 FLASHER LIGHT

REF. NO.	PART NO.	DESCRIPTION	2CB2				REMARKS
1	2CB-H3310-00	FRONT FLASHER LIGHT ASSY 1	1				
2	2CB-H3311-00	.BULB, FLASHER (12V-10W)	1				
3	2CB-H333A-00	.LENS COMP 1	1				
4	1PA-H3328-00	.STAY, FLASHER 2	1				
5	2CB-H331E-00	.CORD ASSY	1				
6	1PA-H3333-00	.SCREW, LENS FITTING	1				
7	1PA-H3358-00	.SCREW, SPECIAL	1				
8	2CB-H3320-00	FRONT FLASHER LIGHT ASSY 2	1				
9	2CB-H3311-00	.BULB, FLASHER (12V-10W)	1				
10	2CB-H334A-00	.LENS COMP 2	1				
11	1PA-H3328-00	.STAY, FLASHER 2	1				
12	2CB-H332E-00	.CORD ASSY	1				
13	1PA-H3333-00	.SCREW, LENS FITTING	1				
14	1PA-H3358-00	.SCREW, SPECIAL	1				
15	3C1-H3318-00	STAY, FLASHER 1	2				
16	2CB-H3330-00	REAR FLASHER LIGHT ASSY 1	1				
17	2CB-H3311-00	.BULB, FLASHER (12V-10W)	1				
18	2CB-H333A-00	.LENS COMP 1	1				
19	1PA-H3328-00	.STAY, FLASHER 2	1				
20	2CB-H331E-00	.CORD ASSY	1				
21	1PA-H3333-00	.SCREW, LENS FITTING	1				
22	1PA-H3358-00	.SCREW, SPECIAL	1				
23	2CB-H3340-00	REAR FLASHER LIGHT ASSY 2	1				
24	2CB-H3311-00	.BULB, FLASHER (12V-10W)	1				
25	2CB-H334A-00	.LENS COMP 2	1				
26	1PA-H3328-00	.STAY, FLASHER 2	1				
27	2CB-H334E-00	.CORD ASSY	1				

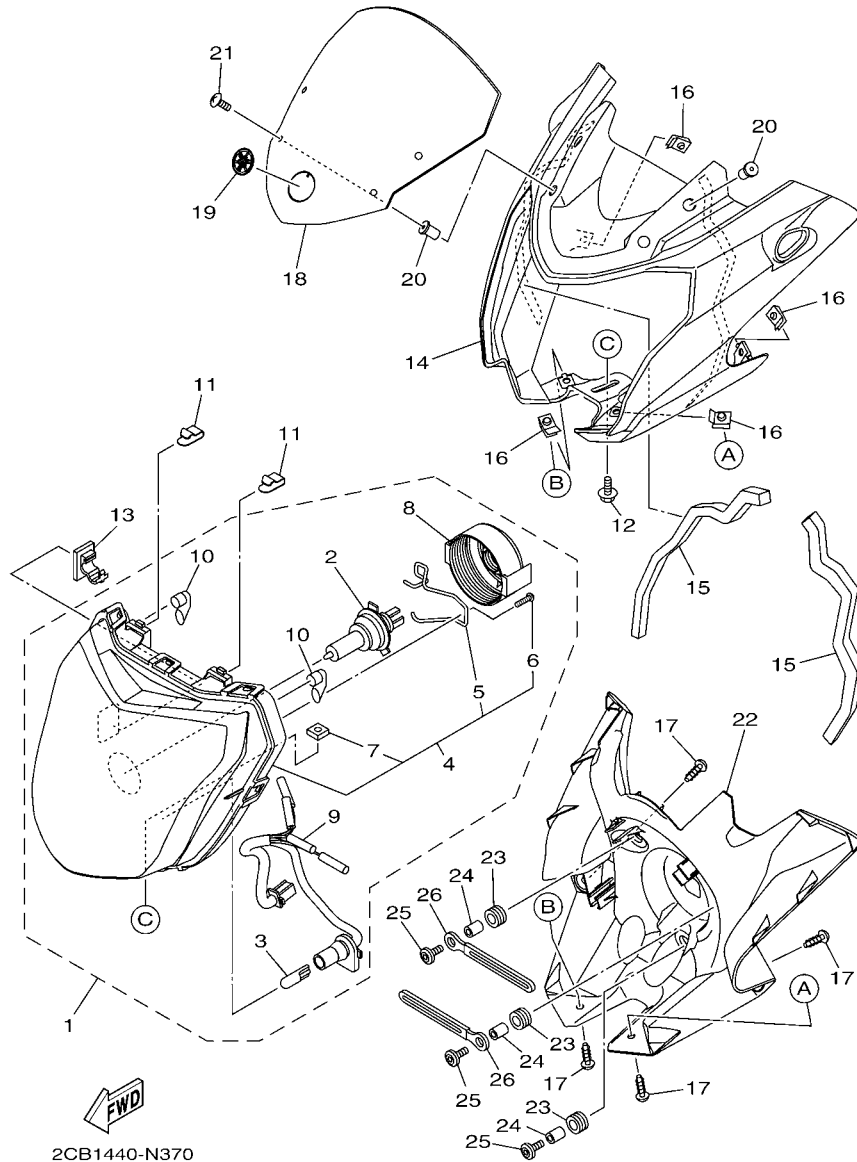
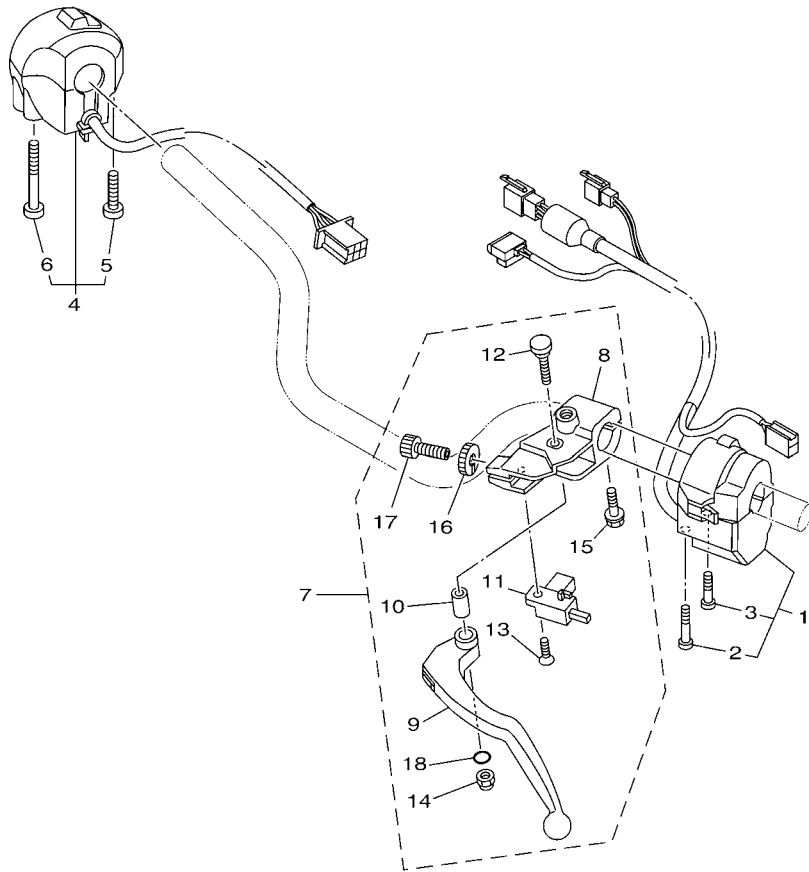


FIG. 37 HEADLIGHT

REF. NO.	PART NO.	DESCRIPTION	2CB2				REMARKS
1	2CB-H4300-00	HEADLIGHT ASSY	1				
2	1PA-H4314-00	.BULB, HEADLIGHT (12V-35/35W)	1				
3	3C1-H4347-00	.BULB (12V-5W)	1				
4	2CB-H430A-00	.HEADLIGHT UNIT ASSY	1				
5	54D-H4335-00	..SPRING	1				
6	1PA-H4365-00	..SCREW	1				
7	4NR-H4317-00	..NUT	1				
8	54D-H4397-00	.COVER, SOCKET	1				
9	2CB-H4312-00	.CORD ASSY	1				
10	2B5-H411V-00	.CAP	2				
11	3S0-H4374-00	CLIP	2				
12	95802-06012	BOLT, FLANGE	1				
13	90464-25160	CLAMP	1				
14	2CB-F8351-00-P3	BODY, COWLING	1				UR FOR RM7
	2CB-F8351-00-P4	BODY, COWLING	1				UR VPBC5 FOR MNM3
	2CB-F8351-00-P5	BODY, COWLING	1				UR S3 FOR WM6
15	90520-15808	DAMPER, PLATE	2				
16	90183-050A7	NUT, SPRING	4				
17	90154-05043	SCREW, BINDING	4				
18	1PA-F8381-00	WINDSHIELD	1				
19	1PA-F836B-00	TUNING FORK MARK	1				
20	90179-05849	NUT	4				
21	90150-05023	SCREW, ROUND HEAD	4				
22	1PA-H4130-00	BODY ASSY, HEADLIGHT	1				
23	90480-14101	GROMMET	3				
24	90387-068D4	COLLAR	3				
25	90111-06842	BOLT,HEX. SOCKET BUTTON	3				



2TP1460-P400

FIG. 39 HANDLE SWITCH & LEVER

REF. NO.	PART NO.	DESCRIPTION	ZCB2				REMARKS
1	2TP-H3972-00	SWITCH, HANDLE 4	1				
2	9850N-05040	.SCREW, PAN HEAD	1				
3	9850N-05030	.SCREW, PAN HEAD	1				
4	1PA-H3975-00	SWITCH, HANDLE 2	1				
5	45P-H2133-00	.SCREW, FITTING	1				
6	1PA-H395W-00	.SCREW, SWITCH FITTING	1				
7	2TP-H2910-00	LEVER HOLDER ASSY (LEFT)	1				
8	3KA-H2911-00	.HOLDER, LEVER 1	1				
9	2TP-H3912-00	.LEVER 1	1				
10	3KA-H3913-00	.COLLAR, LEVER 1	1				
11	5BP-H2917-00	.SWITCH	1				
12	3KA-H3945-00	.BOLT, LEVER	1				
13	90151-03005	.SCREW, COUNTERSUNK	1				
14	95602-06100	.NUT, U	1				
15	97507-06525	.BOLT, WITH WASHER	1				
16	90179-08148	.NUT	1				
17	90123-08046	.BOLT	1				
18	93210-108H5	.O-RING	1				

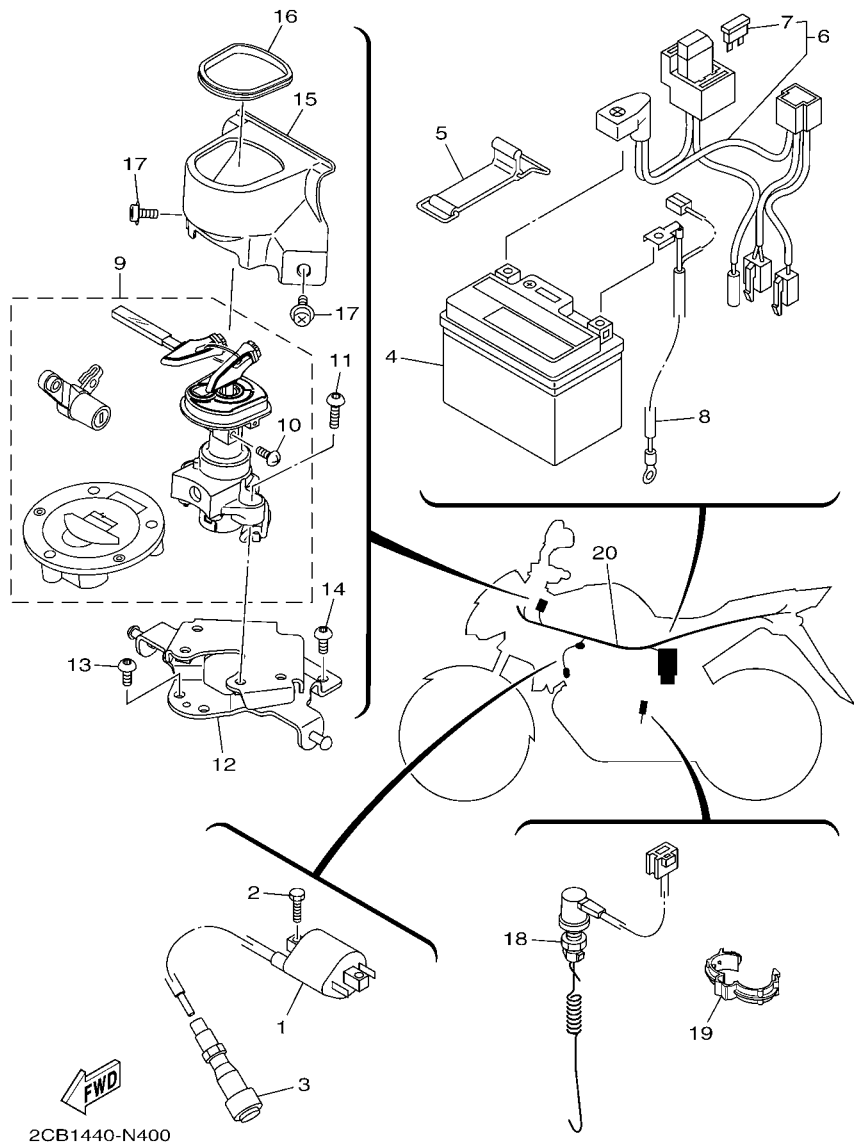


FIG. 40 ELECTRICAL 1

REF. NO.	PART NO.	DESCRIPTION	ZCB2				REMARKS
1	3C1-H2310-01	IGNITION COIL ASSY	1				
2	97002-06016	BOLT, HEXAGON	2				
3	55D-H2370-00	PLUG CAP ASSY	1				
4	2CB-H2100-00	BATTERY ASSY (GS GTZ4V)	1				
5	3C1-H2131-00	BAND, BATTERY	1				
6	1PA-H2150-00	FUSE HOLDER ASSY	1				
7	54P-H2151-00	.FUSE (15A)	2				
8	1PA-H2116-00	WIRE, MINUS LEAD	1				
9	2CB-XH250-01	MAIN SW. STRG. LOCK SUB ASSY	1				
10	97602-05208	.SCREW, PAN HEAD WITH WASHER	1				
11	90149-06118	SCREW	2				
12	1PA-H252C-00	STAY, MAIN SWITCH	1				
13	90149-06309	SCREW	2				
14	90149-06309	SCREW	2				
15	1PA-H2568-00	COVER, MAIN SWITCH	1				
16	1PA-H2545-00	GROMMET	1				
17	90159-06860	SCREW, WITH WASHER	2				
18	1PA-H2530-00	STOP SWITCH ASSY	1				
19	90464-14803	CLAMP	1				
20	2TP-H2590-00	WIRE HARNESS ASSY	1				

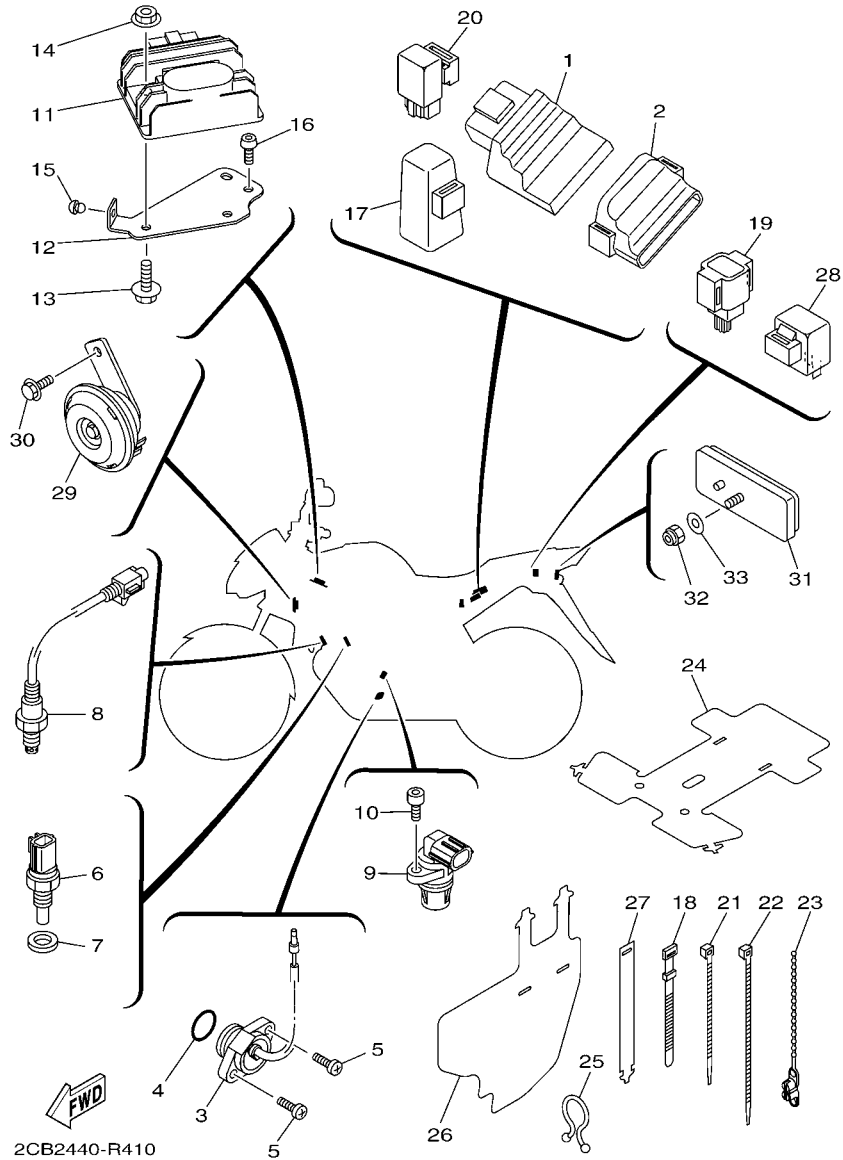


FIG. 41 ELECTRICAL 2

REF. NO.	PART NO.	DESCRIPTION	ZCB2				REMARKS
1	2CB-H591A-10	ENGINE CONTROL UNIT ASSY	1				
2	1PA-H5546-00	BAND	1				
3	1PA-H2540-00	NEUTRAL SWITCH ASSY	1				
4	93210-21801	O-RING	1				
5	98502-05016	SCREW, PAN HEAD	2				
6	54P-H3591-00	THERMO UNIT	1				
7	90430-10802	GASKET	1				
8	2DP-H592A-00	SENSOR, OXYGEN	1				
9	1PA-H3755-00	SENSOR, SPEED	1				
10	91312-06014	BOLT	1				
11	2PV-H1960-00	RECTIFIER & REGULATOR ASSY	1				
12	2TP-H1975-00	PLATE, RECTIFIER FITTING	1				
13	95822-06020	BOLT, FLANGE	2				
14	95702-06500	NUT, FLANGE	2				
15	45P-F1717-00	DAMPER	1				
16	95022-06012	BOLT, FLANGE	2				
17	5TP-H1940-00	STARTER RELAY ASSY	1				
18	3RS-H3936-00	BAND, SWITCH CORD	2				
19	1PA-H2576-00	SENSOR, LEAN ANGLE	1				
20	3C1-H1950-00	RELAY ASSY	1				
21	90464-36800	CLAMP	5				
22	90464-50800	CLAMP	1				
23	90464-20031	CLAMP	1				
24	3C1-H2599-00	COVER, CONNECTER	1				
25	90464-20822	CLAMP	2				
26	1PA-H2589-00	PROTECTOR, WIRE HARNESS	1				
27	1PA-F179E-00	BAND	1				

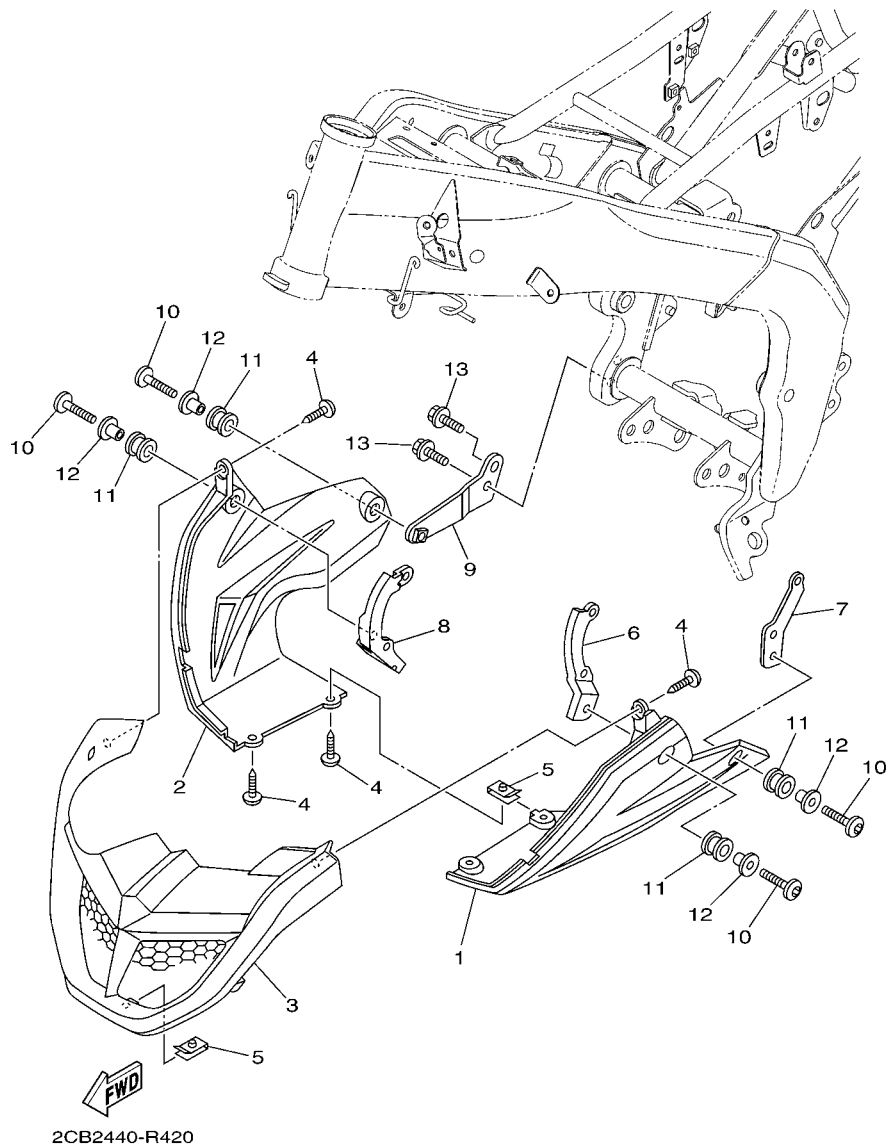


FIG. 42 OPTIONAL PARTS 1

REF. NO.	PART NO.	DESCRIPTION	2CB2			REMARKS
1	2CB-F8385-00-P0	COVER, UNDER	1			UR FOR RM7
	2CB-F8385-00-P2	COVER, UNDER	1			UR FOR WM6
	2CB-F8385-00-P4	COVER, UNDER	1			UR VPBC5 FOR MNM3
2	2CB-F8395-00-P0	COVER, UNDER 2	1			UR FOR RM7
	2CB-F8395-00-P2	COVER, UNDER 2	1			UR FOR WM6
	2CB-F8395-00-P4	COVER, UNDER 2	1			UR VPBC5 FOR MNM3
3	2CB-F837D-00	COVER, UNDER 3	1			
4	97702-50014	SCREW, TAPPING	4			
5	90183-05823	NUT, SPRING	2			
6	2CB-F8283-00	BRACKET, POUCH	1			
7	2CB-F8284-00	BRACKET, UNDER	1			
8	2CB-F8285-00	BRACKET, UNDER 3	1			
9	2CB-F8286-00	BRACKET, UNDER 4	1			
10	90111-06842	BOLT, HEX. SOCKET BUTTON	4			
11	90480-12314	GROMMET	4			
12	90387-068J7	COLLAR	4			
13	9581L-08020	BOLT, FLANGE	2			

NUMERICAL INDEX

PART NO.	REF. NO.	PART NO.	REF. NO.	PART NO.	REF. NO.	PART NO.	REF. NO.	PART NO.	REF. NO.	PART NO.	REF. NO.
3C1-11681-10	2 - 3	3C1-E2170-00	4 - 1	3C1-E441J-00	8 - 26	2PV-E7121-10	14 - 6	2CB-F137X-00-P2	23 - 40	2CB-F3100-00	22 - 1
5YP-12411-00	6 - 1	2ND-E2210-00	4 - 16	5TL-E443E-00	8 - 21	3C1-E7131-00	14 - 5	2CB-F137X-00-P3	23 - 40	1PA-F3110-00	22 - 10
3C1-16193-00	13 - 2	2PV-E2213-00	4 - 17	1PA-E4450-00	8 - 18	2PV-E7131-10	14 - 5	1PA-F144G-00	32 - 1	5BP-F3111-10	22 - 19
5TL-2341E-00	21 - 4	54P-E2228-00	4 - 14	1PA-E4452-00	8 - 19	1PA-E7151-00	14 - 2	2CB-F1511-00-3X	18 - 1	2JK-F3114-00	22 - 18
50C-2536G-00	28 - 16	1PA-E2231-00	4 - 12	1PA-E4485-00	8 - 23	2PV-E7151-10	14 - 2	2CB-F1511-00-4X	18 - 1	5BP-F3118-10	22 - 17
36Y-2589H-00	30 - 6	2PV-E2241-00	4 - 13	1S8-E4613-00	9 - 6	3C1-E7211-00	14 - 12	2CB-F1511-00-5X	18 - 1	1PA-F3126-00	22 - 2
5BU-27234-00	32 - 17	3C1-E2256-00	4 - 15	21C-E4613-00	9 - 6	3C1-E7221-00	14 - 20	1PA-F1611-00	18 - 13	1PA-F3136-00	22 - 6
2PV-E1102-00	1 - 1	2ND-E2280-00	4 - 6	2TP-E4703-00	9 - 1	3C1-E7231-00	14 - 18	1PA-F1621-00	18 - 14	1PA-F3141-00	22 - 15
1S7-E111F-00	4 - 9	1S7-E2288-00	4 - 7	1PA-E4718-00	9 - 2	3C1-E7241-00	14 - 17	1PA-F163A-00	18 - 16	4HF-F3144-00	22 - 5
1S7-E1133-10	1 - 2	1S7-E2405-00	6 - 5	1PA-E4747-00	17 - 7	2PV-E7251-00	14 - 14	1PA-F1650-00	20 - 15		22 - 9
1PA-E1166-00	8 - 31	3C1-E240A-10	6 - 4	1PA-E4799-00	9 - 3	3C1-E7285-00	14 - 19	1PA-F1711-00	19 - 1	4HF-F3145-00	22 - 3
2PV-E1181-00	1 - 14	1S7-E2413-00	6 - 2	2PV-E5113-00	11 - 9	2PV-E7402-20	14 - 11	1PA-F1717-00	23 - 38		22 - 7
2PV-E1185-00	5 - 4	2PV-E2422-00	5 - 1	2PV-E5150-00	10 - 1	2PV-E7411-00	14 - 1	45P-F1717-00	20 - 19	2JK-F3149-01	22 - 16
1PA-E1191-00	1 - 7	2PV-E2428-00	5 - 3	1S7-E5351-00	7 - 3	2PV-E7411-10	14 - 1		41 - 15	22W-F3156-L0	22 - 4
2PV-E1193-00	1 - 10	3C1-E2443-00	5 - 13	3C1-E5362-00	11 - 17	3C1-E7411-10	14 - 1	2CB-F171A-00-P3	23 - 24		22 - 8
2ND-E1196-00	5 - 5	1S7-E2450-01	5 - 7	2TP-E5411-00	11 - 1	3C1-E7411-20	14 - 1	2CB-F171A-00-P4	23 - 24	509-F3158-L0	22 - 13
2PV-E1311-00	1 - 18	5YP-E2462-00	6 - 8	2TP-E5418-00	11 - 10	1S7-E7456-00	14 - 27	2CB-F171A-00-P5	23 - 24	2N4-F3168-00	22 - 20
50C-E1351-00	1 - 19	2TP-E2467-00	6 - 14	2TP-E5421-00	11 - 12	3C1-E7471-00	14 - 9	2CB-F171E-00-P0	19 - 20	1PA-F3170-00	22 - 11
2PV-E1361-00	1 - 11	3C1-E2481-00	6 - 15	2PV-E5441-00	4 - 18	2ND-E8101-00	16 - 4	2CB-F171E-00-P3	19 - 20	2JK-F3173-00	22 - 12
3C1-E1400-10	2 - 1	3C1-E2482-00	6 - 17	2PV-E5451-00	11 - 2	29B-E8110-00	16 - 9	2CB-F171E-00-P4	19 - 20	1PA-F3174-00	21 - 16
3C1-E1412-10	2 - 2	5YP-E2671-00	6 - 7	2PV-E5461-00	11 - 13	29B-E8112-00	16 - 14	1PA-F1721-00	19 - 2	45P-F317J-00	21 - 18
3C1-E1422-10	2 - 6	5YP-E2675-00	6 - 6	1PA-E5514-00	12 - 2	5H3-E8113-00	16 - 10	2CB-F1731-00-7M	19 - 14	31D-F3181-50	22 - 14
1PA-E1454-00	2 - 21	2PV-E3300-00	7 - 1	38B-E5521-00	12 - 3	29B-E8115-00	16 - 11	2CB-F1731-00-P2	19 - 14	29B-F3340-00	22 - 21
2FB-E1454-00	2 - 21	2PV-E3324-00	7 - 8	3C1-E5521-00	12 - 3	21C-E8140-00	16 - 1	2CB-F1731-00-P3	19 - 14	2JK-F3346-00	22 - 24
45P-E1496-00	2 - 16	3C1-E3327-00	7 - 13	1PA-E5524-00	12 - 6	2TP-E8140-00	16 - 1	2CB-F1741-00-7M	19 - 15	1PA-F3411-00	21 - 2
3C1-E1531-10	2 - 22	1S7-E3411-00	7 - 4	2PV-E5524-00	12 - 6	3C1-E8337-00	16 - 3	2CB-F1741-00-P2	19 - 15	1PA-F3412-00	21 - 3
3C1-E1536-10	2 - 15	38B-E3411-00	7 - 4	2TP-E5580-00	12 - 9	2ND-E8511-00	15 - 4	2CB-F1741-00-P3	19 - 15	5BP-F3416-00	21 - 5
3C1-E1549-00	2 - 7	1S7-E3440-00	7 - 7	3C1-E6111-00	13 - 1	3C1-E8511-00	15 - 4	1PA-F179E-00	23 - 23	1PA-F3418-00	21 - 8
1PA-E1603-00	2 - 14	38B-E3440-00	7 - 7	2PV-E6111-10	13 - 1	2ND-E8512-00	15 - 5		41 - 27	1PA-F3435-00	21 - 9
3C1-E1631-11	2 - 11	2TP-E3447-00	7 - 9	45P-E6135-00	13 - 18	3C1-E8512-00	15 - 5	2CB-F17F1-30	19 - 26	3KA-F3441-10	21 - 13
3C1-E1633-10	2 - 12	1PA-E3556-00	8 - 2	3C1-E6144-00	13 - 16	2ND-E8513-00	15 - 6	2CB-F17F1-40	19 - 26	29B-F3462-00	22 - 22
3C1-E1651-11	2 - 5	2PV-E3557-00	8 - 11	2TP-E6150-00	13 - 5	3C1-E8513-00	15 - 6	2CB-F17F1-50	19 - 26	3KA-F3469-00	21 - 15
1S7-E1951-00	5 - 8	1PA-E3585-00	8 - 1	45P-E6154-00	13 - 6	1PA-E8531-00	15 - 7	2CB-F17F2-30	19 - 27	5BP-F3873-01	21 - 1
1S7-E1952-02	5 - 9	1PA-E3635-00	8 - 3	38B-E6193-00	13 - 2	2PV-E8540-00	15 - 1	2CB-F17F2-40	19 - 27	5BP-F3875-00	22 - 23
2PV-E2111-00	3 - 1	2TP-E3750-00	8 - 14	2PV-E6321-00	13 - 8	5TP-E8542-00	15 - 2	2CB-F17F2-50	19 - 27	2CB-F4110-00-P0	23 - 1
2ND-E2113-00	3 - 4	1PA-E3767-00	8 - 13	2UP-E6321-00	13 - 9	2CB-F1110-10	17 - 1	3C1-F1828-00	19 - 9	2CB-F4110-00-P2	23 - 1
1PA-E2117-00	3 - 6	1PA-E3770-00	8 - 6	2PV-E6324-00	13 - 10	2CB-F113J-00	18 - 5	1PA-F1871-00	19 - 6	2CB-F4110-00-P3	23 - 1
3S0-E2118-00	3 - 5	5D7-E3770-00	8 - 6	2PV-E6333-00	13 - 12	2CB-F113K-00	18 - 8	3C1-F1875-00	19 - 8	1PA-F411F-00	23 - 3
1PA-E2119-00	3 - 3	1PA-E3907-10	23 - 15	45P-E6337-00	13 - 13	1PA-F117K-00	24 - 10	1PA-F2110-10	20 - 1	1PA-F411J-00	23 - 36
2PV-E2121-00	3 - 2	54P-E3915-00	23 - 16	3C1-E6344-00	13 - 17	29B-F118E-00	17 - 12	5BP-F2129-01	20 - 4	1PA-F4129-00	23 - 31
50C-E2126-00	3 - 7	54P-E3938-00	8 - 7	2PV-E6345-00	13 - 21	2CB-F118E-10	17 - 12	1PA-F2141-00	20 - 5	1PA-F412Y-01	23 - 2
2ND-E2151-00	3 - 8	1PA-E3971-01	23 - 20	45P-E6351-00	13 - 11	3C1-F1338-00	17 - 11	3C1-F2151-00	20 - 7	1PA-F4139-00	23 - 32
1CK-E2156-00	3 - 14	54P-E4137-00	8 - 8	45P-E6356-00	13 - 15	1PA-F137U-00	23 - 49	1PA-F2174-00	27 - 22	1PA-F413B-00	23 - 54
1S7-E2156-00	3 - 14	54P-E4147-00	8 - 9	1PA-E6357-00	13 - 22	1PA-F137V-00	23 - 50	1PA-F217A-00	20 - 8	1PA-F413Y-00	23 - 8
5YP-E2157-00	4 - 8	5CA-E4147-00	8 - 10	2ND-E6358-00	13 - 14	2CB-F137W-00-7M	23 - 39	1PA-F217F-00	20 - 12	1PA-F4141-00	23 - 55
2ND-E2159-00	3 - 9	2PV-E4199-00	8 - 4	45P-E6371-00	13 - 7	2CB-F137W-00-P2	23 - 39	3C1-F2184-00	20 - 3	54P-F414G-10	23 - 18
	3 - 12	2TP-E4412-00	8 - 17	2TP-E6380-00	13 - 20	2CB-F137W-00-P3	23 - 39	2CB-F2210-00	20 - 20	2CB-F4244-30	23 - 45
2ND-E2161-00	3 - 11	3C1-E4419-00	8 - 25	3C1-E7121-00	14 - 6	2CB-F137X-00-7M	23 - 40	3C1-F2327-00	17 - 10	2CB-F4244-40	23 - 45

NUMERICAL INDEX

PART NO.	REF. NO.	PART NO.	REF. NO.	PART NO.	REF. NO.	PART NO.	REF. NO.	PART NO.	REF. NO.	PART NO.	REF. NO.
2CB-F4244-50	23 - 45	1PA-F580W-00	28 - 3	1PA-F6312-00	29 - 10	2PV-H1960-00	41 - 11	2CB-H334E-00	35 - 27	4C9-W0048-00	26 - 6
2CB-F4245-30	23 - 46	50C-F5827-00	28 - 10	1PA-F6312-10	29 - 10	2TP-H1975-00	41 - 12	1PA-H3350-00	41 - 28	50C-W0048-00	28 - 7
2CB-F4245-40	23 - 46	50C-F5828-00	28 - 11	2TP-F6335-00	29 - 12	2CB-H2100-00	40 - 4	1PA-H3358-00	35 - 7	50C-W0057-00	28 - 4
2CB-F4245-50	23 - 46	50C-F582A-00	32 - 6	3RS-F6372-00	29 - 13	1PA-H2116-00	40 - 8		35 - 14	1PA-WE441-00	8 - 16
2CB-F4246-30	23 - 47	3C1-F582U-00	26 - 1	3C1-F7111-10	31 - 8	3C1-H2131-00	40 - 5		35 - 22	2CB-XH250-01	40 - 9
2CB-F4246-40	23 - 47	1PA-F582W-00	28 - 1	1PA-F7112-00	31 - 9	5TL-H2131-00	24 - 5		35 - 29	90105-10006	21 - 11
2CB-F4246-50	23 - 47	3C1-F583T-03	30 - 2	1PA-F7114-00	9 - 4	45P-H2133-00	39 - 5	2CB-H3371-00	41 - 29	90105-10855	17 - 2
2CB-F4247-30	23 - 48	1PA-F583V-00	32 - 2	1PA-F7211-00	31 - 34	1PA-H2150-00	40 - 6	2CB-H3500-10	36 - 1	90105-10886	17 - 3
2CB-F4247-40	23 - 48	1PA-F5852-00	32 - 10	3C1-F7216-00	31 - 37	54P-H2151-00	40 - 7	1PA-H3571-00	36 - 2	90105-10887	20 - 11
2CB-F4247-50	23 - 48	3C1-F5852-00	30 - 5	50C-F7222-00	32 - 5	3C1-H2310-01	40 - 1	1PA-H3572-00	36 - 3	90105-10888	31 - 3
2CB-F4258-30	23 - 30	20P-F5854-00	32 - 12	1PA-F7262-00	31 - 35	55D-H2370-00	40 - 3	54P-H3591-00	41 - 6	90109-06172	18 - 15
2CB-F4258-40	23 - 30	3RW-F5854-00	30 - 4	3C1-F7311-00	31 - 1	1PA-H252C-00	40 - 12	1PA-H3755-00	41 - 9	90109-06212	19 - 7
1PA-F4312-00	23 - 22	3C1-F5855-00	30 - 8	5BP-F7411-00	31 - 16	1PA-H2530-00	40 - 18	2TP-H3912-00	39 - 9	90109-06279	16 - 2
1PA-F4491-00	23 - 17	1PA-F585B-00	32 - 11	3C1-F7413-00	31 - 21	1PA-H2540-00	41 - 3	3KA-H3913-00	39 - 10	90109-06577	30 - 10
1PA-F4595-00	23 - 21	50C-F5866-00	32 - 7		31 - 29	1PA-H2545-00	40 - 16	3C1-H3922-00	30 - 9	90109-08087	28 - 2
2CB-F470J-00-7M	24 - 12	3RW-F5867-00	30 - 7	3C1-F7431-01	31 - 38	1PA-H2568-00	40 - 15	3RS-H3936-00	41 - 18	90110-05806	23 - 13
2CB-F470J-00-P2	24 - 12	3C1-F5872-00	30 - 1	3C1-F7441-01	31 - 39	1PA-H2576-00	41 - 19	3KA-H3945-00	39 - 12	90110-06873	12 - 10
2CB-F470J-00-P3	24 - 12	1PA-F5873-00	32 - 23	5BP-F7451-00	31 - 20	1PA-H2589-00	41 - 26	1PA-H395W-00	39 - 6	90110-08803	31 - 15
2CB-F470K-00-7M	24 - 13	1PA-F587A-10	28 - 20	3C1-F7452-00	31 - 14	2TP-H2590-00	40 - 20	2TP-H3972-00	39 - 1		31 - 27
2CB-F470K-00-P2	24 - 13	1PA-F5886-10	30 - 16	5BP-F7461-00	31 - 28	3C1-H2599-00	41 - 24	1PA-H3975-00	39 - 4	90110-10026	31 - 17
2CB-F470K-00-P3	24 - 13	1PA-F5887-00	32 - 26	1PA-F7462-00	31 - 26	2TP-H2910-00	39 - 7	5BP-H3980-10	30 - 12	90111-06137	18 - 4
1PA-F4730-00	24 - 1	1PA-F5894-00	32 - 9	1PA-F8100-00	17 - 13	3KA-H2911-00	39 - 8	2B5-H411V-00	37 - 10	90111-06807	9 - 5
1PA-F4731-00	24 - 2	1CK-F5895-00	32 - 15	2CB-F8283-00	42 - 6	5BP-H2917-00	39 - 11	1PA-H4130-00	37 - 22	90111-06842	37 - 25
3C1-F4741-00	24 - 3	50C-F589A-00	32 - 16	2CB-F8284-00	42 - 7	2CB-H3310-00	35 - 1	2CB-H4300-00	37 - 1		42 - 10
45P-F4763-00	24 - 4	50C-F5914-00	28 - 8	2CB-F8285-00	42 - 8	2CB-H3311-00	35 - 2	2CB-H430A-00	37 - 4	90111-08815	26 - 2
1S7-F4768-00	24 - 7	50C-F5916-00	28 - 18	2CB-F8286-00	42 - 9		35 - 9	2CB-H4312-00	37 - 9	90116-08826	27 - 11
1PA-F476U-00	24 - 14	50C-F5917-00	28 - 13	2CB-F8351-00-P3	37 - 14		35 - 17	1PA-H4314-00	37 - 2	90119-06137	18 - 17
1PA-F476V-00	24 - 15	5YP-F5917-00	26 - 8	2CB-F8351-00-P4	37 - 14		35 - 24	4NR-H4317-00	37 - 7		19 - 3
1S7-F4780-00	24 - 6	50C-F5919-00	28 - 6	2CB-F8351-00-P5	37 - 14	3C1-H3318-00	35 - 15	54D-H4335-00	37 - 5		19 - 17
1PA-F478E-00	24 - 9	5PO-F5919-00	26 - 10	1PA-F836B-00	19 - 25		35 - 30	3C1-H4347-00	37 - 3		32 - 22
3C1-F510C-00	25 - 2	1PA-F5921-00	28 - 14		37 - 19	2CB-H331E-00	35 - 5	1PA-H4365-00	37 - 6	90119-06209	8 - 30
1PA-F5168-20-4X	25 - 1	5YP-F5924-00	26 - 11	2CB-F837D-00	42 - 3		35 - 20	3S0-H4374-00	37 - 11	90119-06234	23 - 6
3C1-F5181-00	25 - 8	5YP-F5925-01	26 - 9	1PA-F8381-00	37 - 18	2CB-H3320-00	35 - 8	54D-H4397-00	37 - 8	90119-068B9	18 - 12
1PA-F5186-00	25 - 7	50C-F5933-00	28 - 17	2CB-F8385-00-P0	42 - 1	1PA-H3328-00	35 - 4	1PA-H4704-00	38 - 5	90123-08046	39 - 17
1PA-F530S-00	27 - 2	50C-F5937-00	28 - 12	2CB-F8385-00-P2	42 - 1		35 - 11	2CB-H4710-00	38 - 1	90149-06118	40 - 11
1PA-F5338-20-4X	27 - 1	5YP-F5937-00	26 - 7	2CB-F8385-00-P4	42 - 1		35 - 19	3B1-H4714-00	38 - 2	90149-06309	40 - 13
45P-F5364-00	27 - 4	5YP-F5939-00	26 - 13	2CB-F8395-00-P0	42 - 2		35 - 26	2CB-H472C-00	38 - 3		40 - 14
3C1-F5366-00-33	27 - 6	50C-F5961-00	28 - 15	2CB-F8395-00-P2	42 - 2	2CB-H332E-00	35 - 12	2CB-H4735-00	38 - 4	90149-10802	26 - 14
1PA-F5377-00	27 - 9	1PA-F6111-00	29 - 1	2CB-F8395-00-P4	42 - 2	2CB-H3330-00	35 - 16	1CJ-H5111-00	18 - 6	90150-05023	37 - 21
1PA-F5381-00	27 - 15	1PA-F6240-00	29 - 2	2PV-H1410-00	33 - 2	1PA-H3333-00	35 - 6		18 - 9	90151-03005	39 - 13
1PA-F5383-00	27 - 16	1DY-F6241-00	29 - 6	2PV-H1450-00	33 - 1		35 - 13	3C1-H5130-00	41 - 31	90154-05043	37 - 17
1PA-F5386-00	27 - 17	1PA-F6242-00	29 - 5	2PV-H1800-00	34 - 1		35 - 21	1PA-H5546-00	41 - 2	90159-06054	24 - 11
1PA-F5388-00	27 - 21	1PA-F6243-00	29 - 3	5TP-H1801-00	34 - 2		35 - 28	2CB-H591A-10	41 - 1	90159-06860	19 - 24
1PA-F5443-00	27 - 10	1PA-F6246-10	29 - 7	5D9-H1828-00	34 - 5	2CB-H333A-00	35 - 3	2DP-H592A-00	41 - 8		23 - 27
3C1-F5802-00	26 - 4	2CB-F6280-20	29 - 14	5D7-H183G-00	34 - 3		35 - 18	5PO-W0041-00	30 - 3		23 - 43
3C1-F5803-50	26 - 5	2CB-F6290-20	29 - 15	5D9-H1861-00	34 - 4	2CB-H3340-00	35 - 23	1PA-W0042-00	32 - 3		23 - 53
3C1-F5805-10	26 - 12	1PA-F6311-00	29 - 9	5TP-H1940-00	41 - 17	2CB-H334A-00	35 - 10	1PA-W0046-00	28 - 9		40 - 17
1PA-F580U-01	26 - 3	1PA-F6311-10	29 - 9	3C1-H1950-00	41 - 20		35 - 25	3GD-W0047-00	28 - 5	90163-05803	8 - 20

NUMERICAL INDEX

PART NO.	REF. NO.	PART NO.	REF. NO.	PART NO.	REF. NO.	PART NO.	REF. NO.	PART NO.	REF. NO.	PART NO.	REF. NO.
90170-05803	3 - 10	90240-08145	31 - 31	90464-25160	37 - 13	91312-06016	33 - 4	93306-054YM	14 - 7	95022-06025	4 - 19
	3 - 13	90252-23800	31 - 43	90464-36800	41 - 21	91312-06020	31 - 36	93306-204YS	14 - 24		5 - 11
90170-10012	2 - 28	90269-06812	18 - 18	90464-50800	41 - 22	91312-06025	33 - 3	93306-252X7	27 - 3		5 - 14
90179-05849	23 - 35		19 - 5	90467-08003	19 - 12	91312-06030	29 - 8	93306-252XY	2 - 24	95022-06040	10 - 6
	37 - 20		19 - 16	90467-10805	6 - 20	91312-06100	1 - 17	93306-252YL	14 - 8		11 - 4
90179-08148	39 - 16		24 - 21	90467-12085	32 - 14	9131L-08030	21 - 10	93306-253YB	2 - 25		11 - 15
90179-10805	17 - 4	90280-03017	2 - 10	90467-12800	8 - 22		21 - 14	93306-301XE	25 - 3	95022-06045	10 - 4
	20 - 13	90282-05031	2 - 26	90467-13800	8 - 32	91401-20012	16 - 13	93306-305XP	2 - 8	95022-06050	5 - 15
90179-12808	13 - 4	90338-15802	17 - 8	90467-20804	8 - 24		32 - 20	93306-305XR	2 - 9		11 - 16
90179-14001	13 - 19	90338-16008	8 - 27	90467-23802	8 - 28	91401-25015	31 - 24	93306-906Y4	4 - 2	95022-06055	10 - 3
90179-25810	21 - 6	90338-18122	17 - 9	90480-01558	19 - 4		31 - 32	93310-325X1	12 - 7	95022-06070	10 - 5
90183-050A7	37 - 16	90338-30802	12 - 1		19 - 19	91401-30030	31 - 11	93310-325X3	12 - 7	95022-06080	7 - 11
90183-05823	23 - 52	90340-12813	1 - 3		23 - 37	91701-08035	31 - 42	93310-528YK	2 - 4	95022-06090	11 - 20
	24 - 20	90340-14829	11 - 5		23 - 41	91810-14809	1 - 15	93315-112Y8	13 - 24	95027-06025	30 - 13
	42 - 5	90340-32830	11 - 7		38 - 7		1 - 16	93315-317Y1	20 - 9	95301-08700	32 - 4
90183-06818	23 - 44	90387-06144	6 - 12	90480-01803	6 - 13		10 - 2	93317-218Y1	20 - 2	95302-08600	27 - 24
90183-06822	8 - 29	90387-067V1	18 - 2	90480-10623	23 - 42		11 - 3	93410-20038	14 - 4	95602-05100	41 - 32
90201-05043	41 - 33	90387-06890	23 - 11	90480-12314	42 - 11		11 - 14	93410-22039	14 - 16	95602-06100	18 - 7
90201-05827	36 - 6	90387-06892	23 - 4	90480-12805	18 - 3	92012-08025	32 - 21	93450-16115	2 - 13		18 - 10
90201-06880	6 - 11	90387-068D4	37 - 24	90480-12823	23 - 29	92902-08600	27 - 23	93501-04830	31 - 41		30 - 11
90201-08066	32 - 19	90387-086J7	42 - 12	90480-13567	38 - 6	92902-10600	31 - 5	93505-16844	13 - 23		39 - 14
90201-08612	9 - 8	90387-08085	24 - 16	90480-13867	23 - 28	92907-06200	16 - 12	93604-08800	2 - 20	95602-08200	27 - 12
90201-08859	1 - 12	90387-08813	17 - 6	90480-14004	36 - 5	93101-10843	11 - 19	93605-06800	4 - 5	95602-12200	20 - 6
90201-08871	24 - 18	90387-09803	20 - 16	90480-14101	37 - 23	93102-12862	13 - 25	93608-30839	16 - 7		25 - 9
90201-088N6	24 - 19	90387-10003	31 - 4	90480-15363	6 - 9	93102-12891	16 - 8	93822-15811	14 - 26	95602-14200	27 - 18
90201-10118	30 - 15	90387-10814	20 - 10	90480-15483	23 - 5	93102-20892	14 - 25	93900-00817	25 - 6	95612-08630	1 - 6
	32 - 25	90387-15810	2 - 23	90480-17801	18 - 11	93103-10801	5 - 2		27 - 14	95612-10100	31 - 6
90201-105E8	12 - 4	90387-17804	14 - 13	90480-18549	23 - 10	93106-17801	20 - 14	94109-17805	25 - 5	95702-06500	41 - 14
90201-12019	13 - 3	90401-10812	30 - 14	90501-06022	15 - 3	93106-20814	25 - 4	94112-17804	27 - 13	95702-08500	9 - 7
	33 - 6		32 - 24	90501-06800	15 - 8	93106-22808	27 - 5	94568-D6122	27 - 20	95702-12500	33 - 5
90201-15030	27 - 19	90430-06014	1 - 5	90501-12743	31 - 40	93106-26815	27 - 8	94568-H4096	4 - 11	95802-06012	37 - 12
90201-15821	2 - 17		1 - 9	90501-16800	2 - 19	93210-09806	4 - 3	94700-00872	1 - 13		41 - 30
90201-16813	31 - 10		1 - 21	90501-18576	7 - 5	93210-108H5	39 - 18	94700-00873	1 - 13	95812-06014	20 - 17
90201-173F4	14 - 22	90430-10802	41 - 7	90506-28800	31 - 2	93210-148F8	11 - 6	95022-06010	1 - 4		23 - 7
90201-173U5	31 - 19	90445-08831	19 - 10	90506-35812	31 - 12	93210-15620	32 - 8		1 - 20	95812-06020	20 - 18
90201-20814	14 - 21	90445-08832	19 - 11	90508-183B9	31 - 25	93210-19809	5 - 16		4 - 10	95812-06030	8 - 12
90201-25290	12 - 8	90445-12804	6 - 19		31 - 33	93210-198F9	11 - 18		14 - 28		23 - 12
90201-261L1	29 - 4	90445-21848	31 - 7	90508-32837	16 - 5	93210-21801	41 - 4		24 - 8	95812-08012	17 - 5
90202-26142	21 - 7	90445-22800	31 - 13	90520-03819	23 - 25	93210-26805	34 - 6	95022-06012	5 - 12	95812-08040	9 - 9
90206-17084	31 - 18	90450-27805	6 - 16	90520-05014	23 - 33	93210-328G3	11 - 8		7 - 14	95812-10030	28 - 19
90208-20003	13 - 27		6 - 18	90520-05815	19 - 22	93210-34802	7 - 6		21 - 17	9581L-08020	42 - 13
90209-10020	21 - 12	90450-39805	8 - 33	90520-05816	19 - 21	93210-54805	7 - 12		41 - 16	95822-06010	23 - 9
90209-17285	14 - 3	90450-48803	8 - 15	90520-05817	19 - 23	93210-84804	5 - 6	95022-06016	11 - 11	95822-06020	41 - 13
90209-18208	14 - 15	90462-08812	37 - 26	90520-15802	23 - 26	93306-000Y3	5 - 10		30 - 17	95822-06025	6 - 10
90214-10800	2 - 18	90464-14803	40 - 19	90520-15808	37 - 15	93306-001X6	4 - 4	95022-06020	1 - 8	95822-08025	24 - 17
90215-10284	2 - 27	90464-14807	19 - 13	91312-05010	23 - 14	93306-003Y7	14 - 23		6 - 3	97002-06016	40 - 2
90240-08005	32 - 18	90464-20031	41 - 23		23 - 19	93306-004XV	27 - 7		7 - 10	97012-06020	16 - 15
90240-08144	31 - 23	90464-20822	41 - 25	91312-06014	41 - 10	93306-054XB	14 - 7		8 - 5	97507-06525	39 - 15

NUMERICAL INDEX

PART NO.	REF. NO.	PART NO.	REF. NO.	PART NO.	REF. NO.	PART NO.	REF. NO.	PART NO.	REF. NO.
97602-05208	40 - 10								
97702-30016	36 - 4								
97702-50012	19 - 18								
	23 - 51								
97702-50014	36 - 7								
	42 - 4								
98502-05012	29 - 11								
98502-05014	31 - 22								
	31 - 30								
98502-05016	41 - 5								
98502-05025	7 - 2								
9850N-05030	39 - 3								
9850N-05040	39 - 2								
98512-06012	14 - 10								
98707-04045	32 - 13								
98902-05016	23 - 34								
99002-10600	16 - 6								
99009-10400	12 - 5								
99009-20500	13 - 26								